



## **Columbia Basin Sustainable Water Coalition Stakeholder Meeting**

**Thursday, September 21, 2023**

**10:30 am - 12:30 pm**

**Moses Lake City Council Chambers, 401 S Balsam St, Moses Lake / Zoom**

**Purpose:** Provide relevant groundwater information, networking, and Coalition updates for municipal and small water purveyors and other stakeholders.

**Outcomes:** Increased stakeholder knowledge and understanding of relevant groundwater issues and potential solutions.

**Description of Meeting Topic(s)/Presentation(s):** Washington State Integrated Planning, and Spokane Aquifer Joint Board's Outdoor Watering Nerds resources.

---

### **Welcome, Introductions & Roundtable**

Elsa Bowen revisited the concept of CBSWC membership. There is no cost to be a member. There are two categories of membership: Member and Associate Members. Members are any person residing in Washington State or any entity operating in Franklin, Lincoln, Adams, or Grant County, in Washington State, with an interest in the Group A and B water systems within said counties. Associate members are any state or federal official, agency, department, or staff person representing such. Associate members are non-voting members. For entities that represent multiple members, like a Town, one person must be named as that entity's voting member.

Membership sign-up sheets were circulated and those online were asked to indicate their interest in being a member.

Self-introductions were conducted. There were roughly 37 online attendees, and 33 in person attendees.

Present: Claire Miller, Cari Cortez, Dean White, Elsa Bowen, Kristina Ribellia, Ricahrd Law, Shawn O'Brien, Paull Wollman, Clint Didier, Debbie Chapman, Cathi Read, Mike Schwisow, Amy Rodman, Tonilee Hanson, Bonnie of Port of Royal Slope, McKenna Murray, Jill Van Hulle, Tim Welsh, Jamie Clark, Stev Worley, Milt Miller, Andrew Austreng, Ben Serr, Sara Higgins, Deborah Jonson, Steve, Katherine Ryf, Jamin Ackney, Craign McCuistion, Ryan Gross, Michele Keisz, Scott Bantam, Rich B, Judi Ellis, Ben Lee, Scott Tarbutton, Tom Tebb,

### **GUEST PRESENTATIONS**

Ben Lee, the CBSWC technical contractor with Landau Associates, introduced the meeting's presenters.

### **WA Department of Ecology, Office of Columbia River, Integrated Planning**

Tom Tebb, Director, and Scott Tarbutton, Hydrogeologist, Office of Columbia River, Dept of Ecology presented.

- Yakima Basin Integrated Plan - adopted by state legislature, includes seven key elements that move simultaneously through the 20 year time period
- Icicle Strategy includes hatchery, pump station for irrigation, co sponsors with Chelan County, includes 8-mile dam
- Walla Walla Water 2050 Strategic Plan (Bi-State government). Competing demands, overallocated water rights. Goal is to ensure adequate water for people, irrigated agriculture, instream flows



- Major takeaways include the importance and effectiveness of consensus based approach.
- Takes time to build relationships and trust, membership, before putting plan together.
- Need diverse support at state and federal level for all projects
- Prices range from \$200-500million, and growing.
- Discussion of whether integrated planning in the Basin could replace adjudication. Would rely on Tribes and many other partners
- Observation that relationships and partnerships needed for fish passage and other projects can and need to be worked on. This relationship building would require a professional facilitator and begin the slow work of building relationships based on goals. Lesson learned that it is worth the hard work and time to build relationships first, before building plan.
- OCR has been trying to build up ASR portfolio, need more funding for these projects.
- Comment that the Basin has some very engaged elected representatives - use it.

### **Spokane Aquifer Joint Board (SAJB)**

Tonilee Hanson, Program Manager, SAJB

- Outdoor Watering Nerds website developed to provide interactive tools and resources so property owners can calculate how much water they need for their property or needs: <https://outdoorwateringnerds.org/>
- SAJB is a government entity made up of 21 public and private water systems in WA and ID. Funded from ID DEQ, WA ECY, and fees from water providers based on number of connections
- Question and focus: how to get property owners and users to voluntarily try to conserve. Focus attention on the river because it's what people see. Focus efforts to educate not only on water levels, but actions that impact river water quality and therefore aquifer quality
- Resource shared: <https://www.spokanecounty.org/1227/SVRP-Aquifer-Home>

### **CBSWC WATERSMART GRANT ACTIVITY**

#### **Organizational Development Update**

Elsa Bowen, Board Chair, reported

- There are two open Board positions, those interested in joining the Board should let a Board member know.
- Elections are in November, it is very important that members identify themselves as such, and as the voting member for their entity, so that they have a vote.
- The CBSWC website is live, [www.cbswc.org](http://www.cbswc.org)
- November meeting will be elections and annual meeting

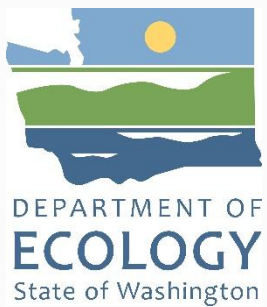
#### **Well Monitoring Update**

- Ben Lee reported on current stages, will present draft report at November meeting

### **ADJOURN: 12:20pm**

Next meeting: Thursday, November 16, 2023, 10:30am-12:30pm

*CBSWC's Mission is to address potable groundwater supply issues by creating locally-driven recommendations that influence water management and policy that will direct resources to create sustainable water solutions.*



# Integrated Planning

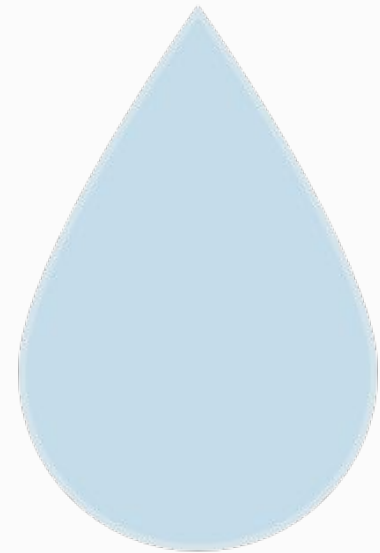
Columbia Basin Sustainable Water Coalition

September 21, 2023



# Office of Columbia River's Mission

- Aggressively pursue water supply development for both instream and out-of-stream uses
- RCW 90.90 Statutory Focus
  - Alternatives to groundwater for Odessa Subarea
  - Water supply for pending water right applications
  - Uninterruptible water supplies for interruptible water right holders
  - Future water supplies for municipal, domestic, industrial, and irrigation needs
  - Water for instream needs





# What is Integrated Planning?

- Integrate the efforts of a diverse group of agencies, tribes, and stakeholders around a water supply issue
  - Create a space for all the interest groups to meet and discuss different perspectives
  - Identify shared goals and outcomes
  - Work together on implementation to reach the shared goals and outcomes
  - Make consensus-based decisions

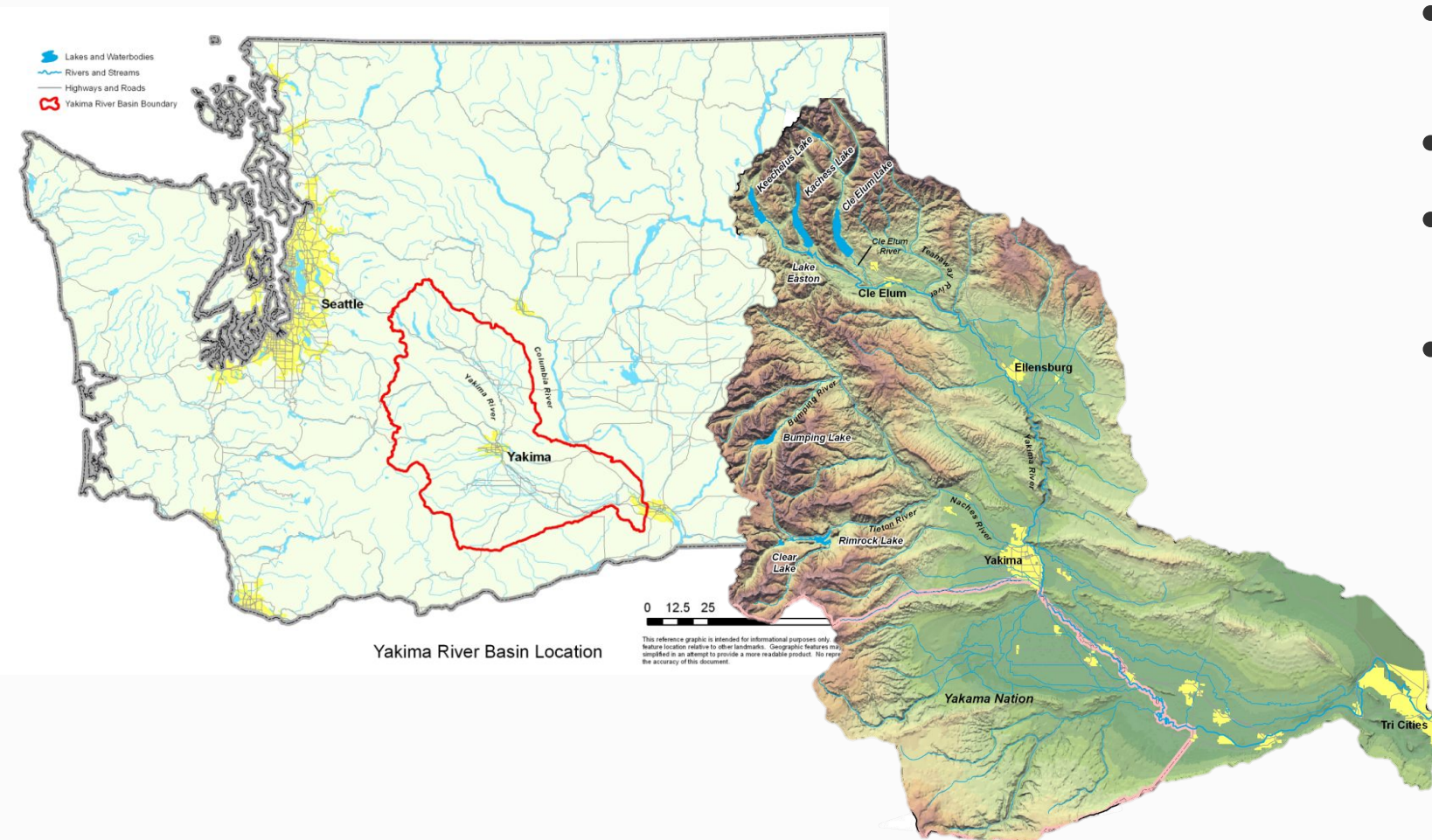
# OCR Integrated Planning Examples

- Yakima Basin Integrated Plan
- Icicle Strategy
- Walla Walla Water 2050 Strategic Plan



# Yakima Basin Integrated Plan

- Basin size: 6,155 sq. miles
- Population: 360,000
- \$4.5 Billion agricultural economy
- Historically, second to the Snake River in supporting Columbia Basin salmon and steelhead runs





# YRBWEP Workgroup Members

- **Federal Agencies**

- Bureau of Reclamation
- National Marine Fisheries Service
- U.S. Fish and Wildlife Service
- U.S. Forest Service
- U.S. Army Corps of Engineers

- **Yakama Nation**

- Yakama Nation Natural Resources
- Yakima/Klickitat Fisheries Project

- **Washington State Agencies**

- Department of Ecology
- Department of Agriculture
- Department of Fish and Wildlife
- Department of Natural Resources

- **Local Governments**

- Benton County
- Kittitas County
- Yakima County
- City of Yakima

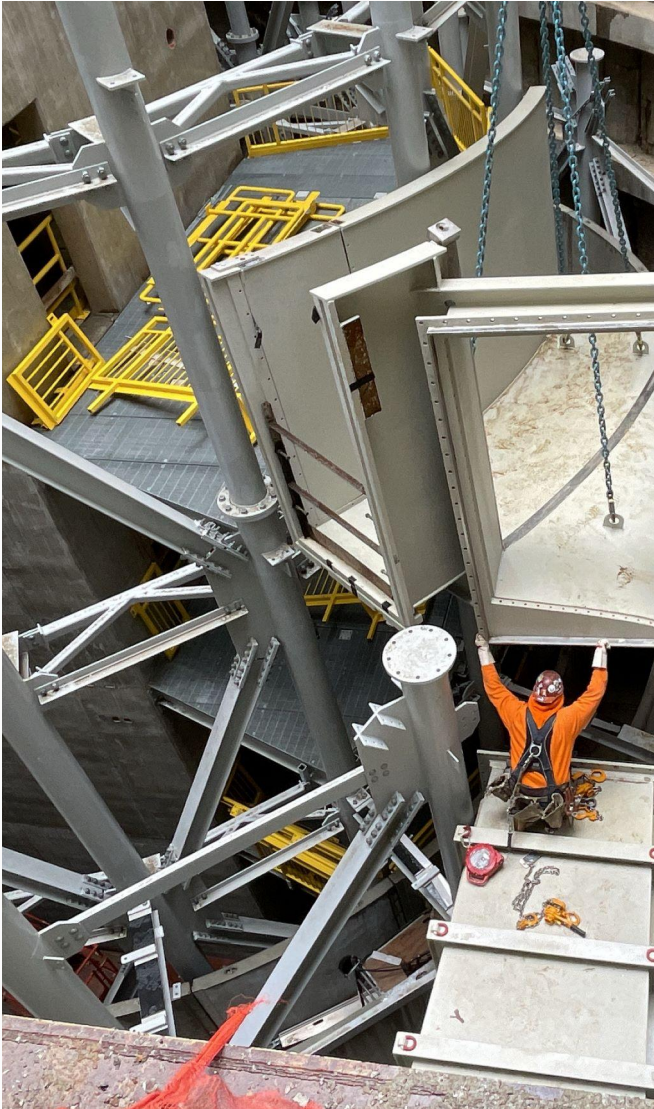
- **Irrigated Agriculture**



14-Year Anniversary – June 2009 to June 2023

*Everyone will get some of what they need, but not everything they want.*

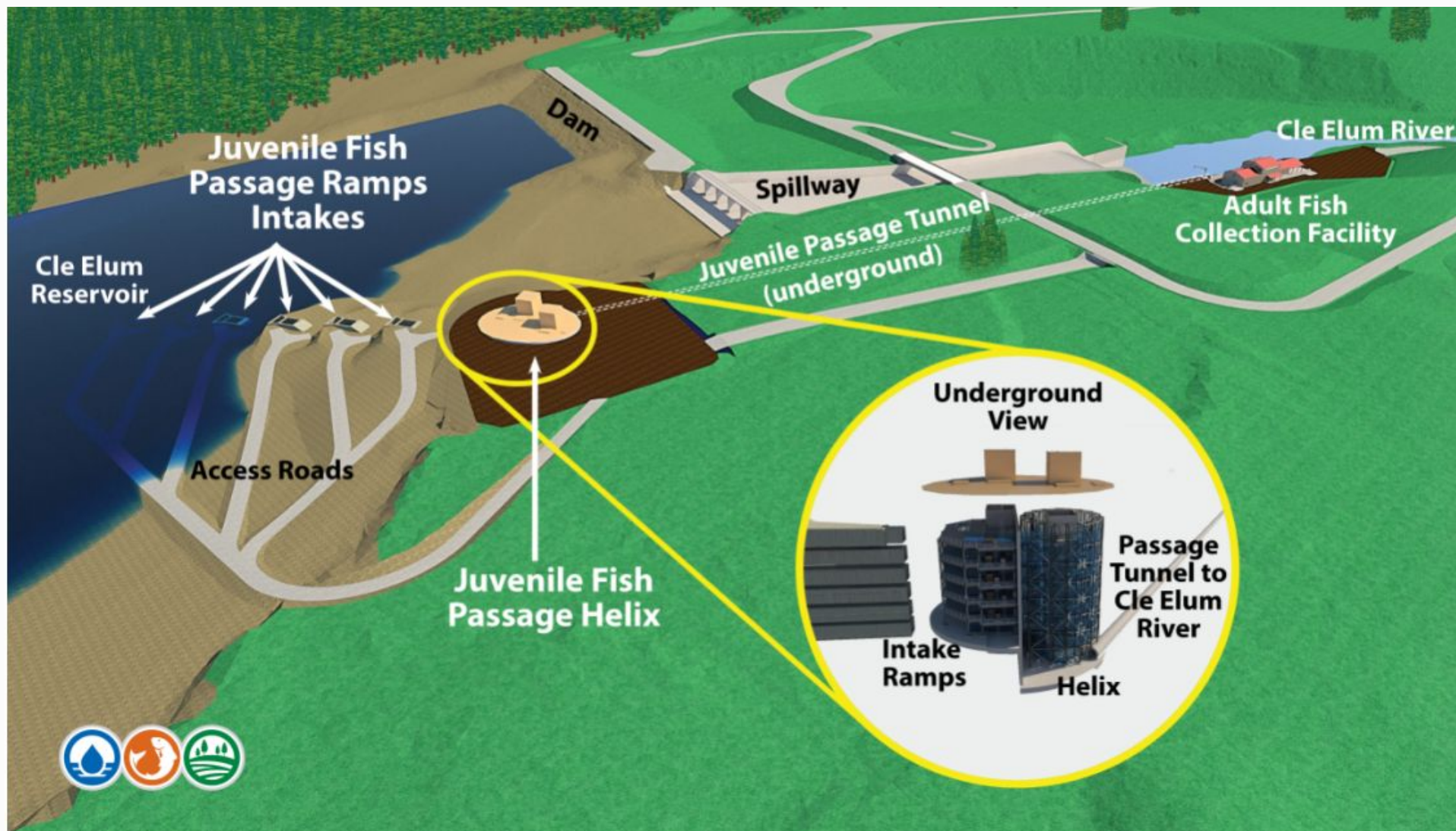
# YBIP – 7 elements



- Habitat/Watershed Protection and Enhancement
- Fish Passage
- Enhanced Water Conservation
- Structural and Operational Changes
- Surface Water Storage
- Groundwater Storage
- Market Driven Reallocation



# Cle Elum Pool Raise and Fish Passage



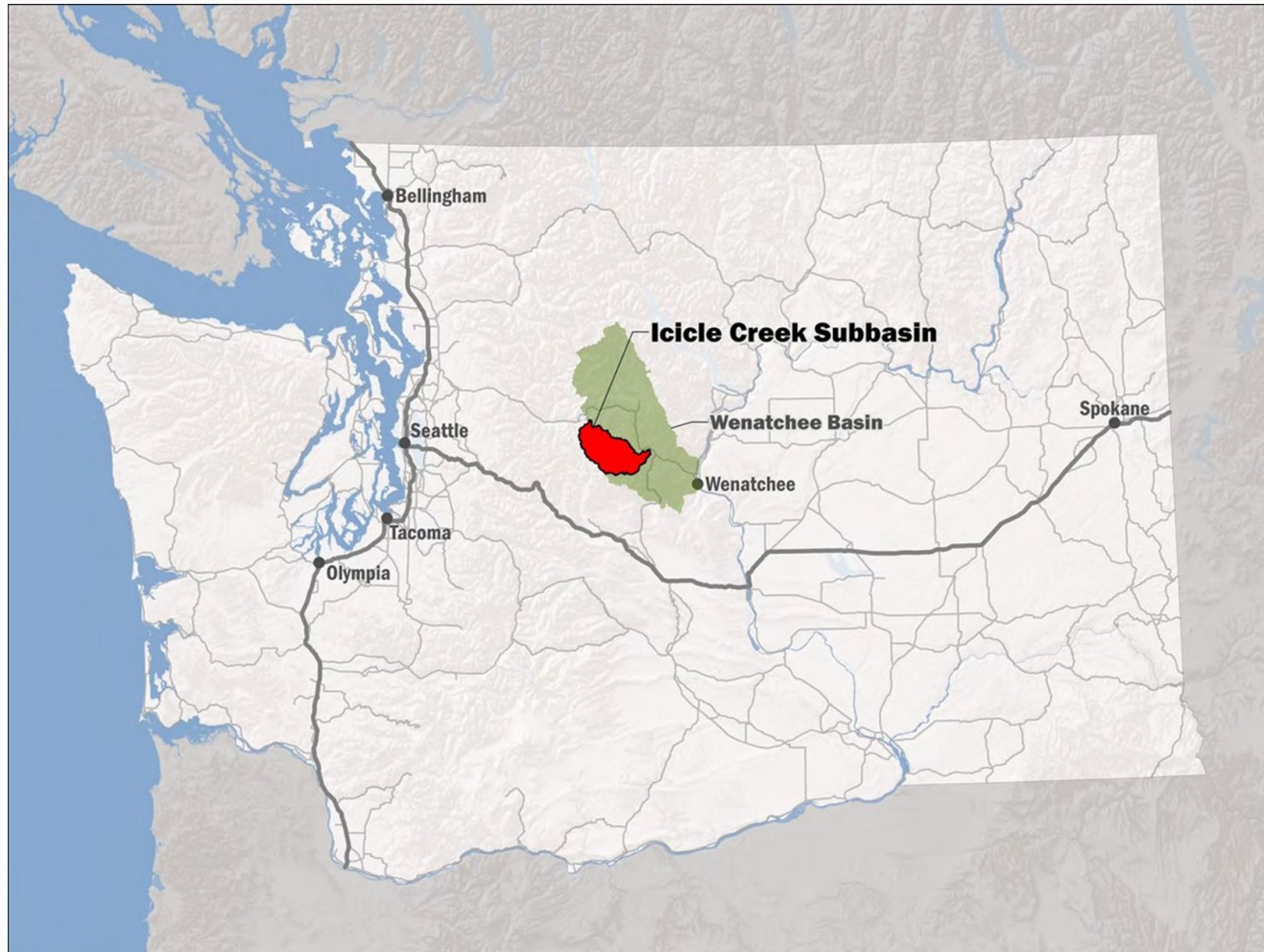


# Cle Elum Juvenile Fish Passage Helix





# Icicle Strategy



- Collaborative process that will achieve diverse benefits defined by all the Guiding Principles.
- The Icicle Creek Work Group uses best available science to identify and support water management solutions that lead to implementation of high-priority water resource projects in the drainage.

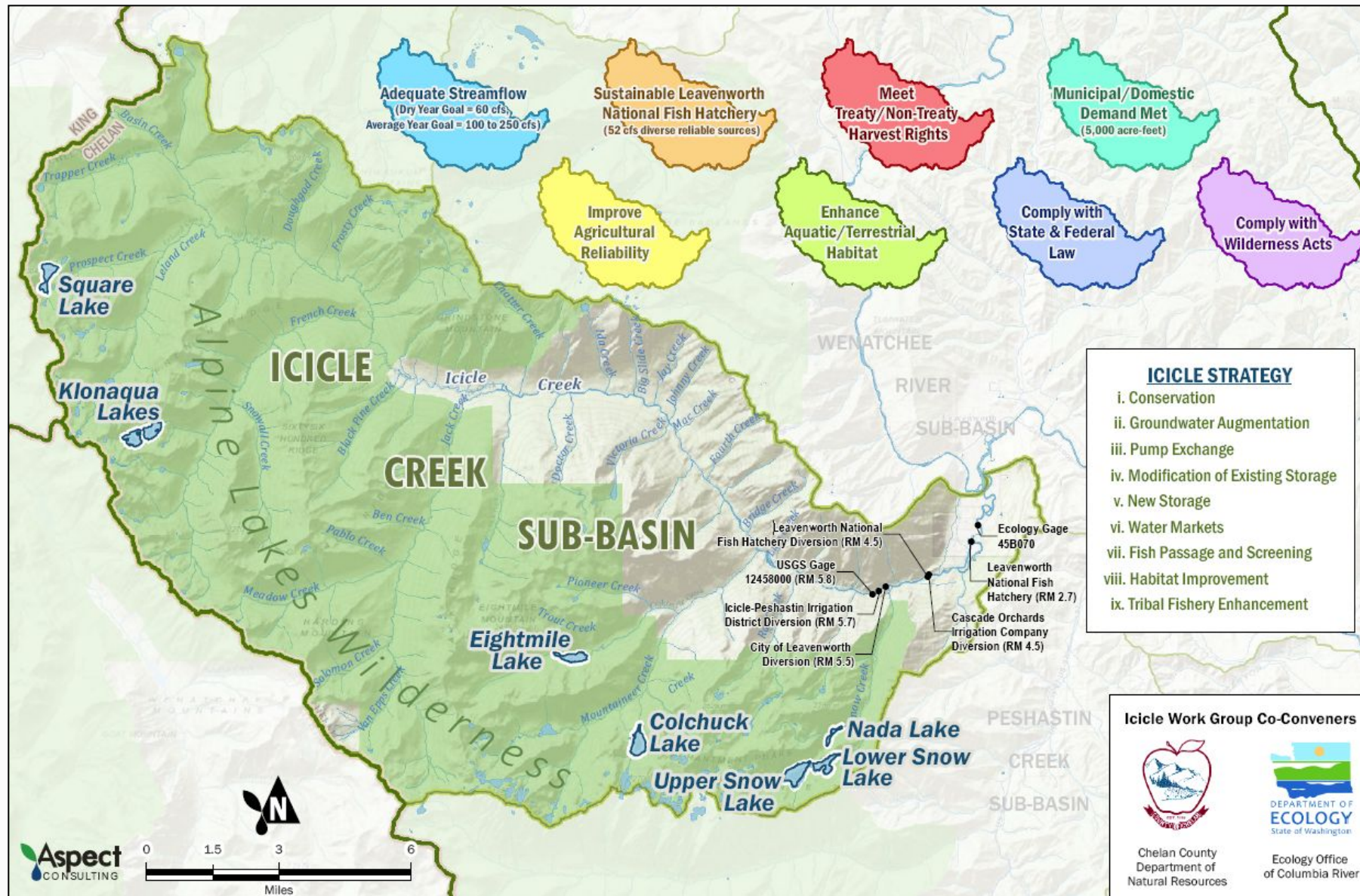
# Icicle Strategy Workgroup Members



- Ecology Office of Columbia River
- Chelan Co Board of Commissioners
- Yakama Nation
- WA State Dept of Fish & Wildlife
- Conf Tribes of the Colville Reservation
- Icicle & Peshastin Irrigation District
- USFWS – Leavenworth Fish Hatchery
- City of Leavenworth
- NOAA Fisheries
- WA Water Trust
- US Forest Service
- Trout Unlimited
- Agricultural Representatives
- City of Cashmere
- US Bureau of Reclamation
- Cascadia Conservation District
- Cascade Orchard Irrigation Co
- Icicle Creek Watershed Council



# Icicle Strategy Guiding Principles





# Eightmile Dam



Notch, Controlled By Stop Logs

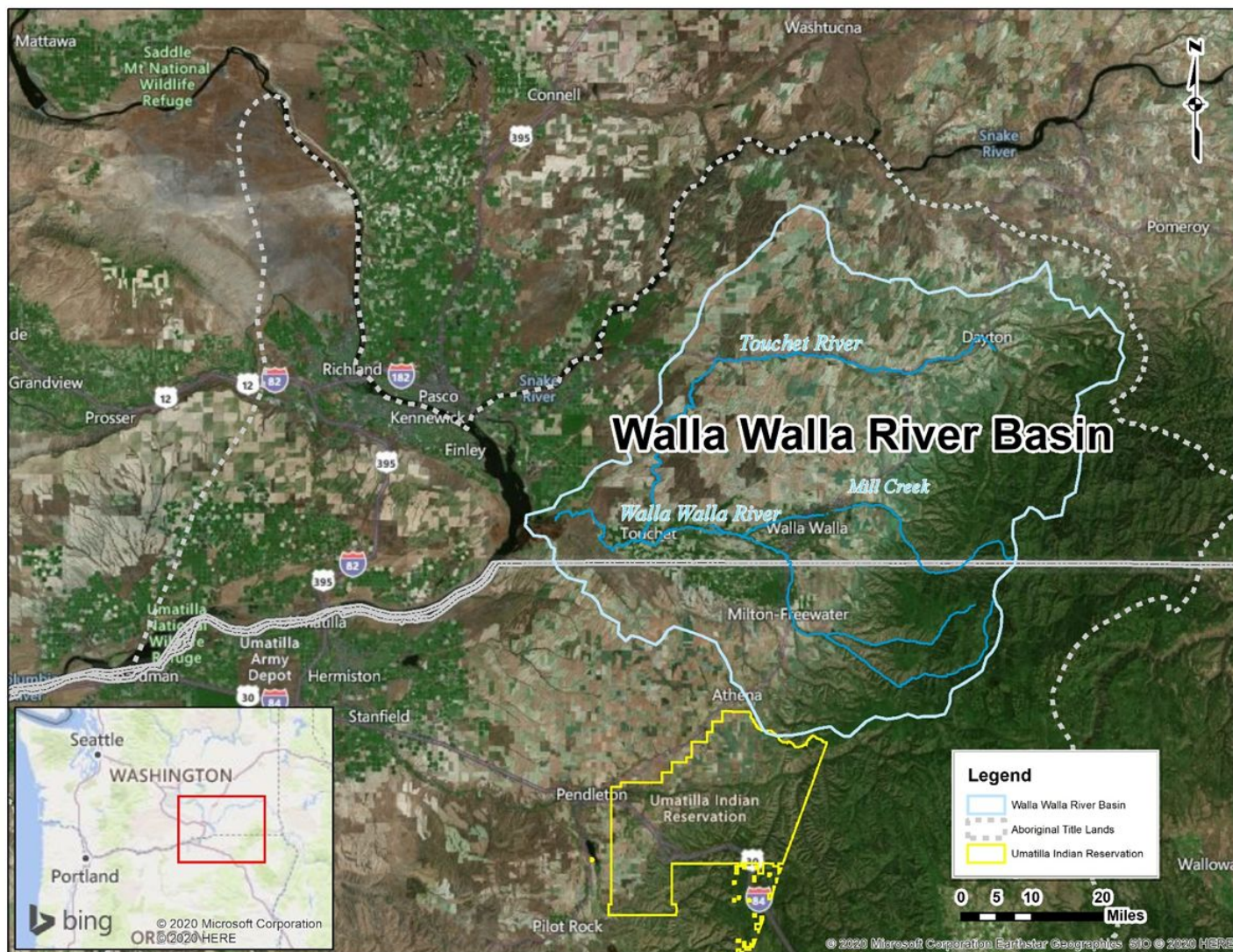
Spillway

Current High Water Surface  
Elevation ~ 4,667 Feet

Historical High Water Surface  
Elevation ~ 4,671 Feet



# Walla Walla Water 2050 Strategic Plan



- Bi-state basin
- Over-appropriated; junior water rights are curtailed and instream flows go unmet
- ~85,000 irrigated acres
- Municipal, industrial, and habitat demand



# Walla Walla Water 2050 Strategic Plan



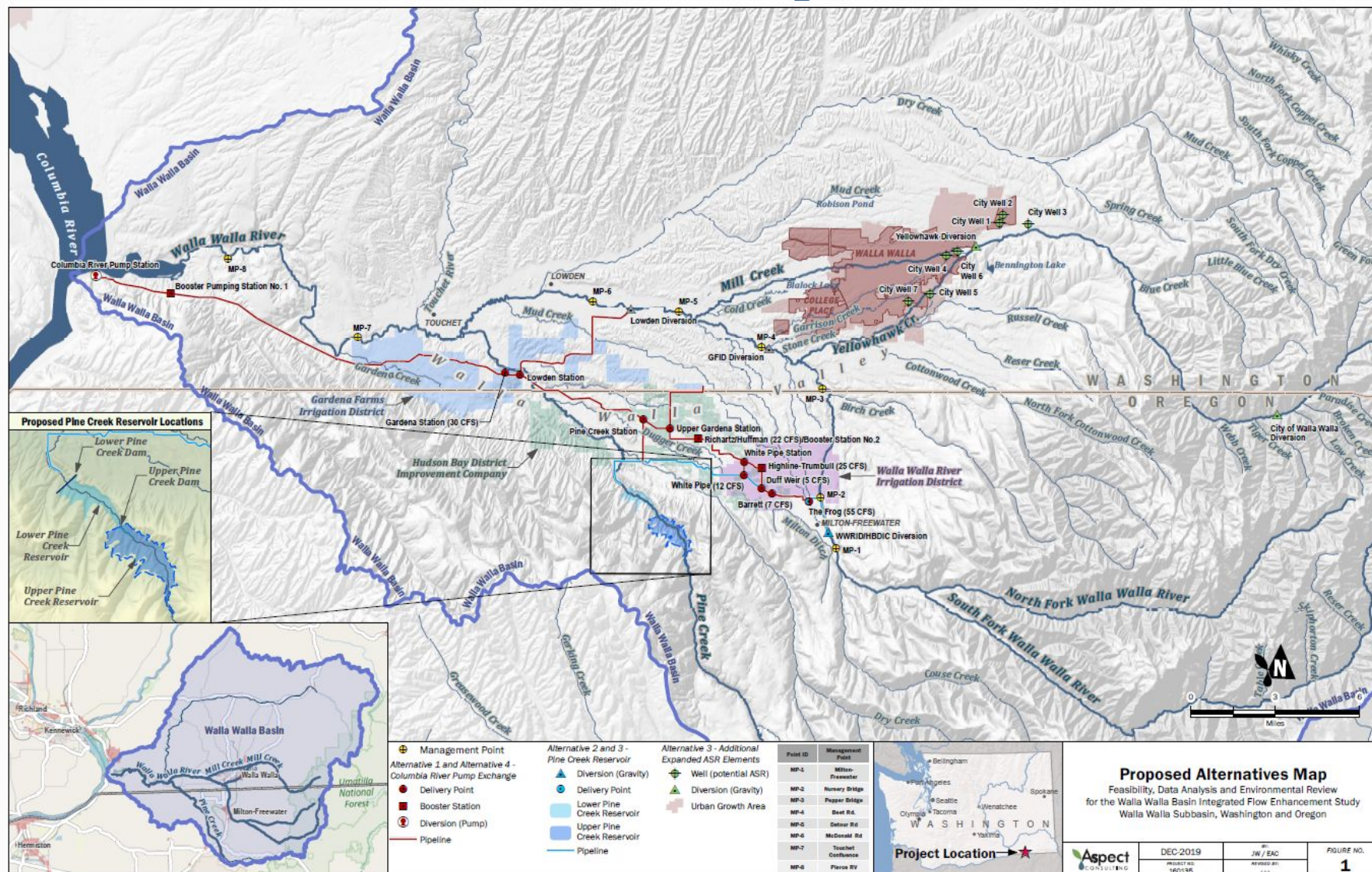
- 30-year effort
- Ensure adequate water – for people, irrigated agriculture, and instream flows for fish and wildlife
- Identify and prioritize key strategies for project implementation
- Led by the states of WA and OR, and the CTUIR, with participation by local stakeholders

# WWW2050 Basin Advisory Committee

Interest Group	Primary	Alternate
<b>Agriculture</b>	Mark Wagoner - Gardena Farms Irrigation District	Mike Ingham - Gardena Farms Irrigation District
	Annie Byerley - Walla Walla Conservation District	Renee Hadley - Walla Walla Conservation District
	Allie Newhouse - Little River Group	TBD
	Travis Trumbull - Walla Walla River Irrigation District	Nathan Rea - Oregon Agriculture
<b>Environment</b>	Ralph Perkins - Walla Walla Basin Watershed Council	Arnold Coe - Walla Walla Basin Watershed Council
	Judith Johnson - Kooskooskie Commons	Sarah Dymecki - Washington Water Trust
	John Foltz - Snake River Salmon Recovery Board	Ali Fitzgerald - Snake River Salmon Recovery Board
<b>Recreation/Quality of Life</b>	Linda Herbert - Blue Mountain Land Trust	Jerry Norquist - Community Member
<b>Economic Development</b>	Nicholas Velluzzi - Walla Walla Community College	Mike Fredrickson - Port of Walla Walla
<b>Local Government</b>	Steven Patten - City of Milton Freewater	Brian Steadman - City of Milton Freewater
	Frank Nicholson - City of Walla Walla	TBD
	Dan Dorran - Umatilla County	TBD
	Todd Kimball - Walla Walla County	Jack Miller - Columbia County
<b>Tribal Government</b>	Jerimiah Bonifer - CTUIR	David Haire - CTUIR
<b>Federal Government</b>	Justin Yeager - NOAA NMFS	Colleen Fagan - NOAA NMFS
	Cindy Boen - US Army Corps of Engineers	Bret Walters - US Army Corps of Engineers
<b>State Government</b>	Mark Wachtel - WA Department of Fish and Wildlife	Jeff Dengel - WA Department of Fish and Wildlife
	Taylor McCroskey - OR Department of Fish and Wildlife	TBD
<b>Tri Sovereigns (Ex-Officio/Non-Voting Members)</b>	Anton Chiono - CTUIR	
	Chris Kowitz - OR Water Resources Department	
	Brook Beeler - WA Department of Ecology	Melissa Downes - WA Department of Ecology



# WWW2050 Flow Study Alternatives







# Thank you

Tom Tebb, [gteb461@ecy.wa.gov](mailto:gteb461@ecy.wa.gov)

Scott Tarbutton,  
[scta461@ecy.wa.gov](mailto:scta461@ecy.wa.gov)





# COLUMBIA BASIN SUSTAINABLE WATER COALITION (CBSWC)

Groundwater levels in areas of the Columbia Basin have been declining for decades and now impact almost all water wells. It is critically important that water systems have a reliable water source. A coalition of water purveyors and other municipal and small community water system stakeholders was created to develop locally and regionally implementable activities to address the issue for domestic groundwater supplies.



## Water Conservation Strategies

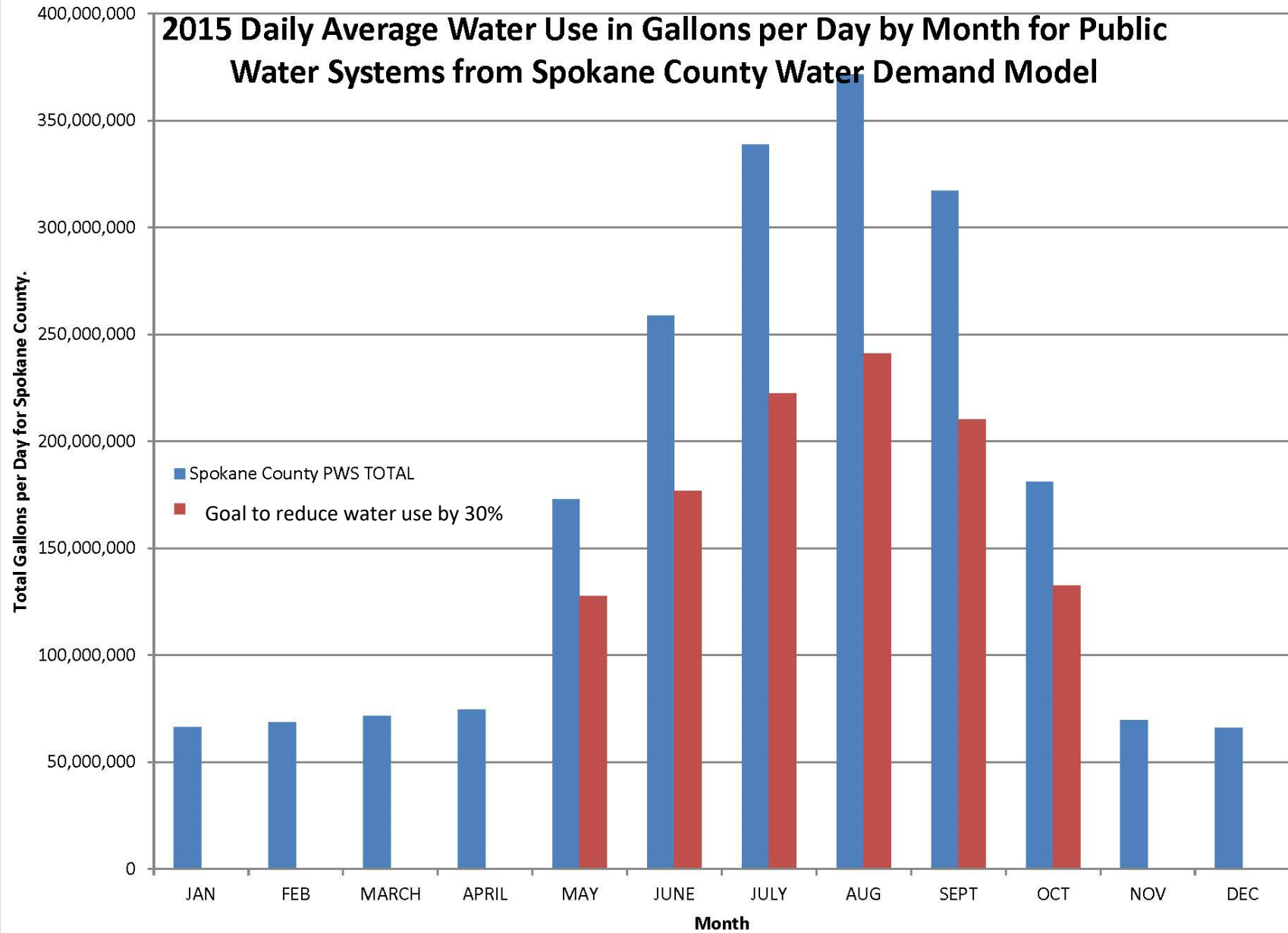
Tonilee Hanson, SAJB Program Manager  
September 21, 2023



- The [Spokane Aquifer Joint Board](#) (SAJB) is comprised of 21 public and private water providers in Spokane County WA who rely on the Spokane Valley Rathdrum Prairie (SVRP) Aquifer, a sole source aquifer for over 600,000 residents in WA and ID.
- The [Spokane River Forum](#) is a WA 501c3 dedicated to regional dialogues and individual empowerment to protect the Spokane River watershed.
- The [Idaho Washington Aquifer Collaborative](#) is an Idaho 501c3 comprised of Idaho and Washington municipal and private Class A and B water and wastewater purveyors.



## 2015 Daily Average Water Use in Gallons per Day by Month for Public Water Systems from Spokane County Water Demand Model



# 2015 – 2022 Water Conservation Awareness

- Invited speakers and researched other programs.
- Created Videos such as “[Our Water Our Future](#)”.
- Social Media and Display Ads Media Campaigns .
- Convened Conferences to discuss water quality and supply issues.
- Developed and Published [Efficient Irrigation and Landscape Design Guidelines](#).
- Roadshows to introduce the Design Guidelines.
- Technical Workshops on irrigation and landscape best practices.
- October 2022-March 2023 created website “Outdoor Watering Nerds”





A Regional Resource Created By



Individual actions make a difference.  
Everyone can do their part  
to protect the Spokane River and  
Spokane Valley Rathdrum Prairie Aquifer.

## [Saving Water Matters to Protect the Spokane River & SVRP Aquifer >>](#)

### Looking for Outdoor Watering Solutions?

Outdoor Watering Nerds can connect you to Professionals and Do It Yourself resources for outdoor leak detection, sprinkler repair and retrofit, and landscape design. The Nerds are excited to bring you how-to videos, water saving tips, rebates, classes, and events in Kootenai and Spokane counties. Saving water outdoors protects your pocketbook, economic growth, the Spokane River, and our sole source of drinking water, the Spokane Valley Rathdrum Prairie Aquifer. Good for you. Good for our future.



[Outdoor Leak Detection](#)



[Sprinkler Systems](#)



[Landscapes](#)



[How to Videos](#)

#### Useful Links

- [Calculate Water Needs](#)
- [DIY Resources](#)
- [Find a Professional](#)
- [How to Videos](#)
- [Irrigation & Landscape Guidelines](#)
- [Rebates](#)
- [Tips to Save Water](#)
- [Help Us Improve Our Site](#)

#### Sponsored by





## Useful Links

Calculate Water Needs

DIY Resources

Find a Professional

How to Videos

Irrigation & Landscape Guidelines

Rebates

Tips to Save Water

Help Us Improve Our Site

49 Webpages  
links to 246 external  
resources

Videos  
69 external  
56 embedded  
DIY Resources 42  
Find a Professional 12  
topics and 65 listings

# Calculate Water Needs

Wondering how much to water your lawn? In this section you can find out how much water your lawn needs by week or season. After you know how much water your lawn needs, you can measure how much water your sprinklers are applying. Then you can calculate how long to run your sprinklers for a healthy lawn that doesn't waste water.



Daily Calculator



Seasonal Water Needs



Calculate Sprinkler Time



# Seasonal Water Needs

Want to do your part to save water? Grass needs much less water in April, May and September. Adjust your lawn watering based on Spokane and Kootenai counties seasonal watering needs. A calendar of watering needs was calculated using daily data from local Agrimet Stations for the years 2015, 2016, 2018, 2019, 2020, and 2021. A three-day running average was calculated to estimate how much water you would need to apply to your lawn if you water every three days. Notice how much less water is needed in spring and fall.

**3 Day Average Lawn Watering Needs (inches)**



**Weekly Average Lawn Watering Needs (inches)**



**Monthly Average for Daily Lawn Watering Needs (Inches)**



Date (April-May)	3 Day Average Lawn Watering Needs (inches)
3-Apr	0.20
6-Apr	0.18
9-Apr	0.23
12-Apr	0.27
15-Apr	0.27
18-Apr	0.39
21-Apr	0.40
24-Apr	0.38
27-Apr	0.41
30-Apr	0.44
3-May	0.49
6-May	0.52
9-May	0.52
12-May	0.55

Date (June-July)	3 Day Average Lawn Watering Needs (inches)
2-Jun	0.50
5-Jun	0.59
8-Jun	0.49
11-Jun	0.46
14-Jun	0.54
17-Jun	0.51
20-Jun	0.55
23-Jun	0.54
26-Jun	0.60
29-Jun	0.63
2-Jul	0.60
5-Jul	0.65
8-Jul	0.63

Date (Aug-Sep)	3 Day Average Lawn Watering Needs (inches)
1-Aug	0.65
4-Aug	0.57
7-Aug	0.56
10-Aug	0.49
13-Aug	0.50
16-Aug	0.57
19-Aug	0.51
22-Aug	0.53
25-Aug	0.46
28-Aug	0.42
31-Aug	0.45
3-Sep	0.41
6-Sep	0.39



## Scheduling in a Box

The red line shows how much extra water you will use if you turn your sprinklers on in March and turn them off in October without adjusting for how much water your lawn needs. To have a healthy lawn and save water, adjust your sprinklers with the changing seasons.



Adjust your sprinkler run time from April-September to give your lawn only what it needs.

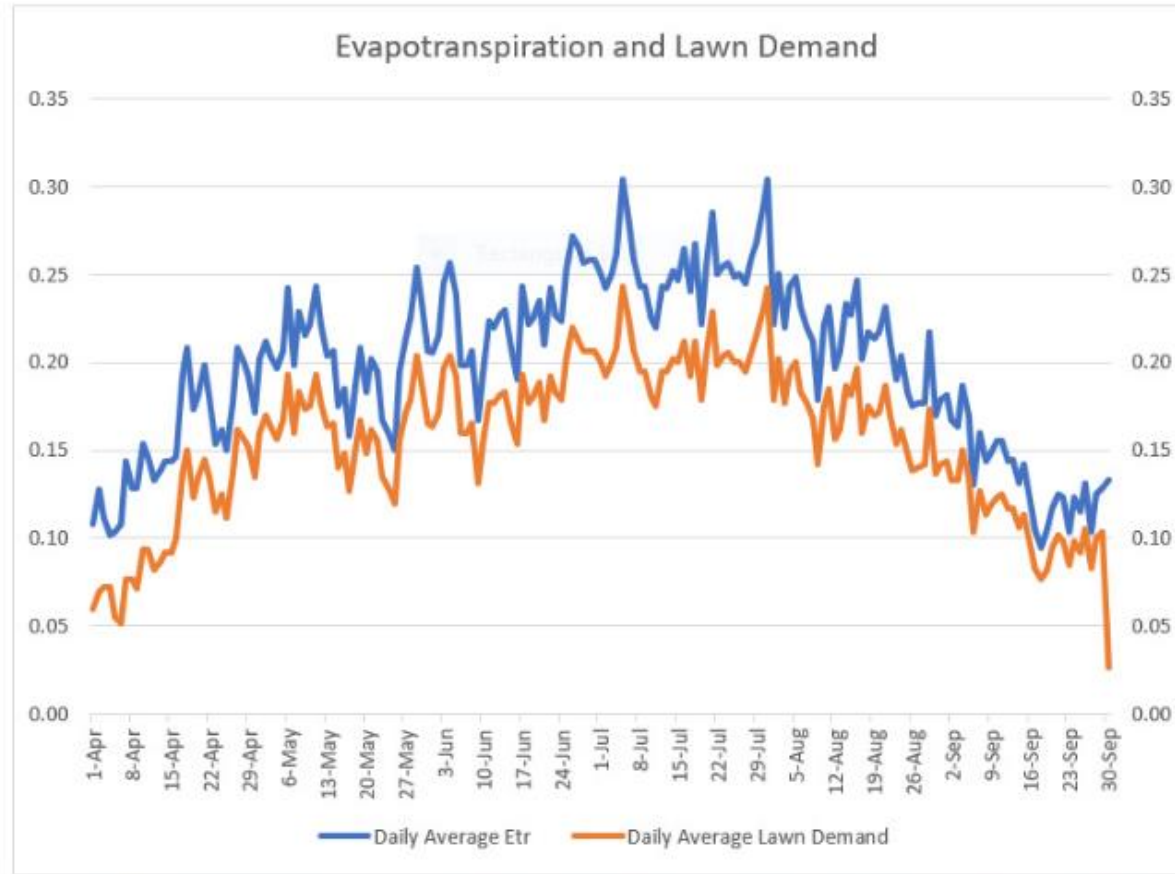


Figure 1. Evapotranspiration (Etr) and Lawn Demand, Daily Average, Spokane / Coeur d'Alene area.

Figure 1 shows the variability in evapotranspiration (ET) and Lawn ET values. Generally, lawn demand is about 70% of the reference ET. (Data is shown in inches).

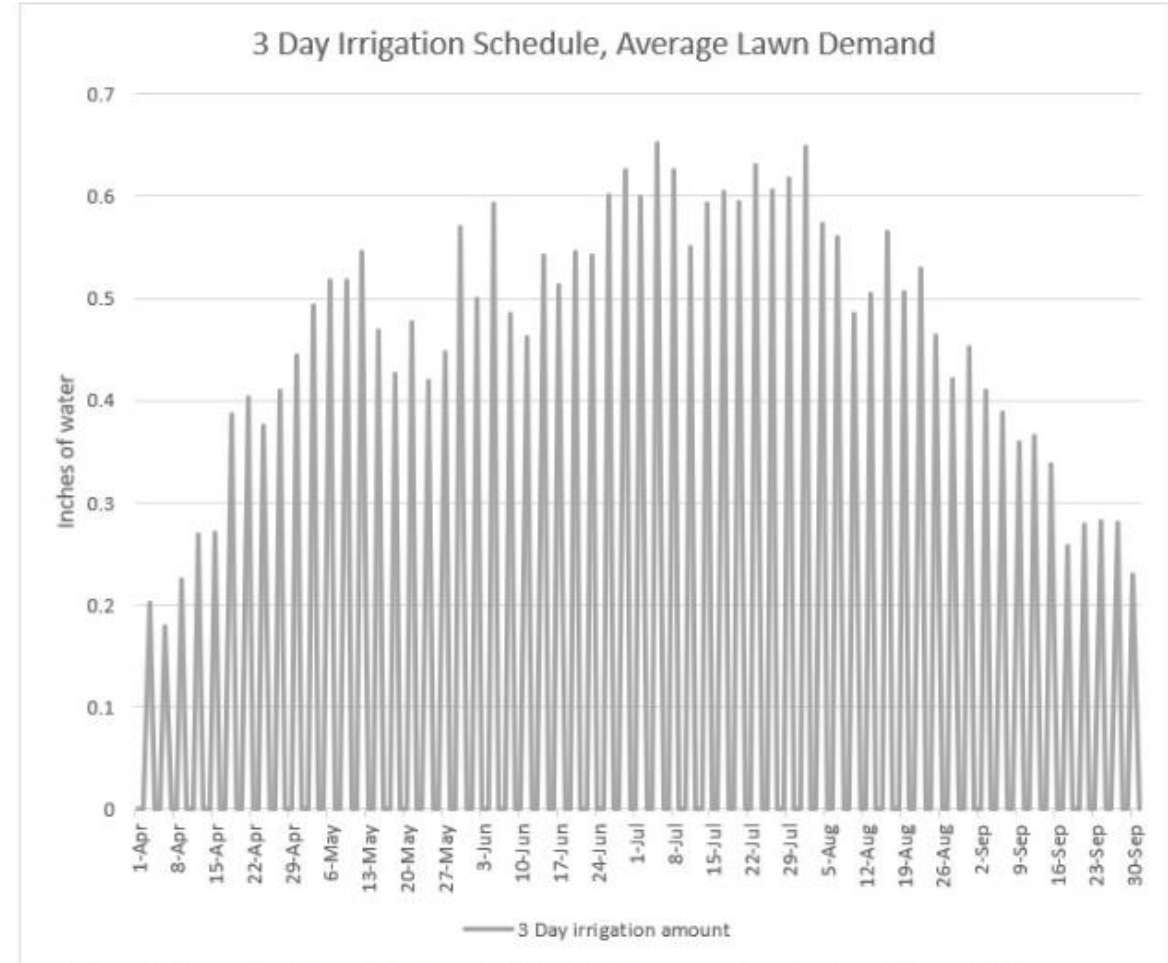


Figure 2. Amount of water to be applied if watering every 3 days, Spokane / Coeur d'Alene area.

Figure 2 shows the 3-day watering needs of lawn crop. In only a few cases should a lawn crop demand an amount in excess of 0.6 inches in one watering event.



---

# DIY Resources

Listing of professionals does not include a recommendation or certification.

Choose from the list of DIY resources below by checking the boxes to narrow your search.

Spokane & Kootenai Counties ▾

- ☐ Drip Irrigation (13)
- ☐ Hardscape (11)
- ☐ Landscape Design Architect (1)
- ☐ Native Plant Nursery (19)
- ☐ Sprinkler Timer (13)
- ☐ Web Supplier (11)
- ☐ Education (5)
- ☐ Landscape Design (7)
- ☐ Leak Detect & Repair (3)
- ☐ Sprinkler Repair & Repair (14)
- ☐ Topsoil, Bark, & Gravel (13)

[Clear filters & show all](#)

# Find a Professional

Listing of professionals does not include a recommendation or certification. Want to verify a business license or endorsement? In WA go to the [Department of Revenue](#). In ID go to the [Secretary of State](#).

Choose from the list of professionals below by checking the boxes to narrow your search.

Spokane & Kootenai Counties ▾

- |   |   |
|---|---|
| <input type="checkbox"/> Arborist (17)                    | <input type="checkbox"/> Backflow Assembly Testers (Listed by Water Provider) (1) |
| <input type="checkbox"/> Drip Irrigation (5)              | <input type="checkbox"/> Education (2)  |
| <input type="checkbox"/> Landscape Design (16)            | <input type="checkbox"/> Landscape Design Architect (11)                          |
| <input type="checkbox"/> Leak Detect & Repair (10)        | <input type="checkbox"/> Maintenance (14)   |
| <input type="checkbox"/> Native Plant Nursery (3)         | <input type="checkbox"/> Professional Installation (12)                           |
| <input type="checkbox"/> Sprinkler Repair & Retrofit (23) | <input type="checkbox"/> Sprinkler Timer (15)                                     |

[Clear filters & show alphabetical list of all professionals](#)

Found 64 Results Page 1 of 1



Below are useful tips on how you can save water

How do I know if I have a leak?

+

Why has my water bill increased?

+

Is there a best time to run my sprinklers?

+

How often should I water?

—

Adjust your watering frequency and length based on temperature and rainfall. For sprinkler systems, install rain shut-off devices that will automatically shut off your sprinklers when it rains or weather-based irrigation equipment that adjusts run times based on real-time weather data. [Install a Weather Based Irrigation Timer that will adjust watering based on weather data.](#) Look for the EPA Water Sense logo.

Water your lawn once every three days during the summer. Even during the hottest part of the year, most lawns do not need to be watered every day. By watering only once every three days, you promote deeper root growth and that makes your lawn more water efficient..

Here are three tests to determine if water is needed:

1. Push a 6" long screwdriver shaft into the ground. If it goes in easily, don't water.
2. If your lawn has a grayish cast or appears to dull green, it needs water.
3. Walk on your lawn. If your footprints don't disappear quickly, the grass blades don't have the needed moisture to spring back and need water.

From October 1<sup>st</sup> to March 31<sup>st</sup> lawns in our area go dormant and do not need watering. A brown lawn is not a dead lawn. See [Calculate Water Needs](#).

What type of sprinkler head is best?

+

How long should I water?

+

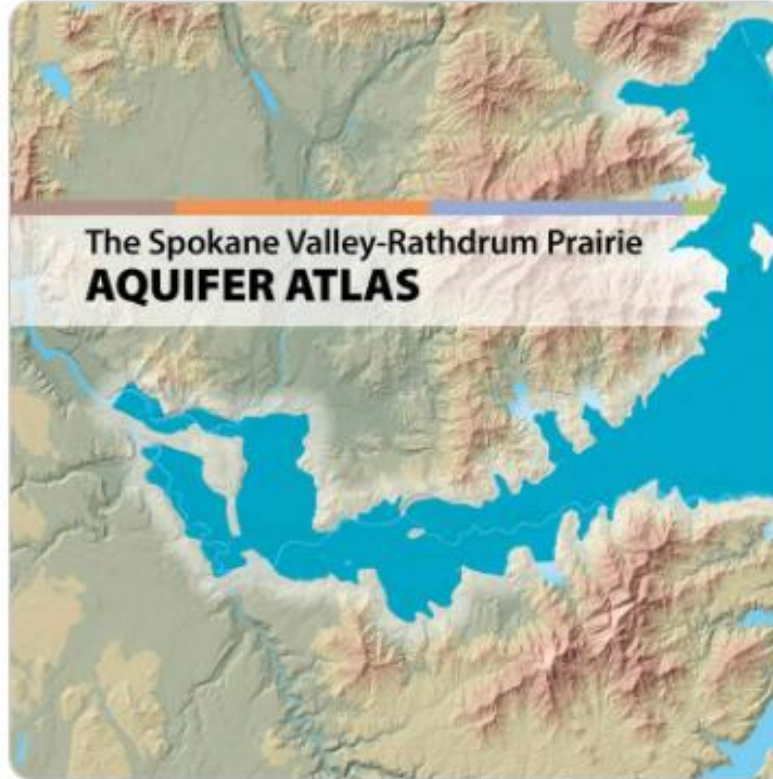
# Saving Water Matters

Explore our Story Map to learn how water quality and water quantity are both essential to the SVRP Aquifer, Spokane River, and our quality of life. Want to become a Water Nerd? The Aquifer Atlases and videos are filled with amazing facts and details about the river and aquifer.

In the summer months as we are pumping more water from the aquifer to water our lawns, the Spokane river flow is at its lowest. It is during this time that the river needs water the most to maintain a healthy environment for fish, wildlife, and recreation. It takes all of us doing our part to protect our aquifer and river by using water wisely and finding ways to reduce water waste.



Aquifer and River Story Map



Aquifer Atlases



Videos

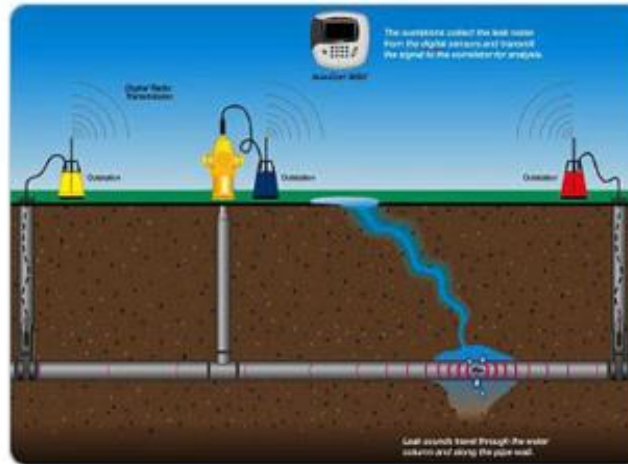


# Outdoor Leak Detection

Wondering how to find a water leak? Let Outdoor Watering Nerds help you find and fix leaks before they damage your property and cost you money. In this section you'll find out how a water meter and other technologies can help you detect, locate, and repair leaks.



Read Your Water Meter



Underground System Leaks



Leak Detection Videos

# Read Your Water Meter

## Step 1. Locate your meter

The water meter is generally located in the ground near the curb in front of your house.



The meter box will often have a metal or plastic lid with "Water Meter" marked on top.



## Step 2. Open the meter box

To read the meter, remove the lid of your water meter box. Be careful! Lids can be heavy. And sometimes, bugs and small animals hide inside the meter boxes. Replace the lid each time you finish looking at the meter to avoid a safety hazard.



## Step 3. Identify your meter

There are many types of water meters. The one you have is based on who provides your water. Your meter may measure water in cubic feet (CF) or in gallons (GAL).

### Analog Dials



### Digital Dials



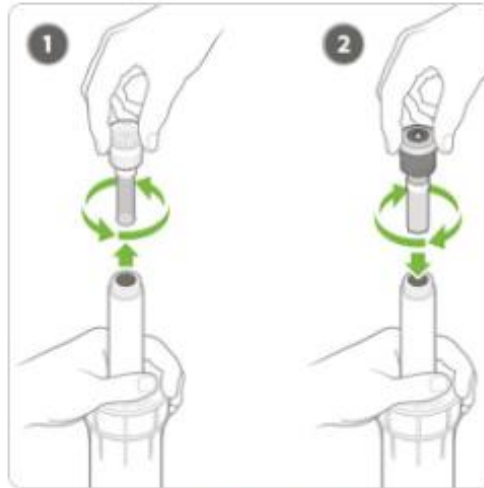


## Sprinkler Systems

Wondering how to maintain, repair, or retrofit your sprinkler system? In this section you'll find a sprinkler system checkup, how to videos, links to professionals and DIY resources for every part of your sprinkler system. Find out how a backflow device can protect your drinking water.



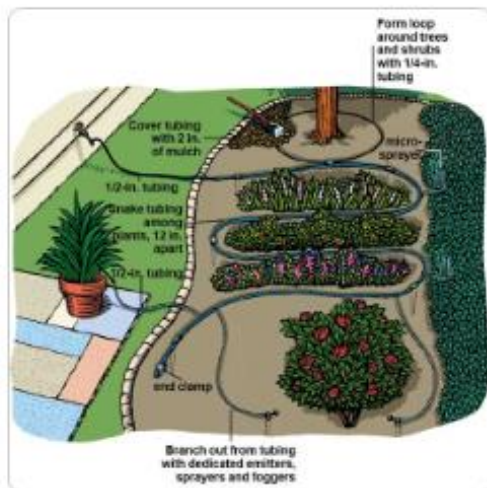
## Sprinkler System Checkup



## Repair and Retrofit



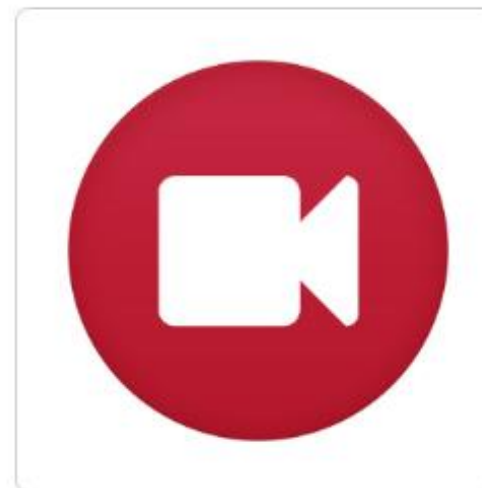
## Smart Controllers and Sensors



### Drip Irrigation & Soaker Hoses



## Backflow Protection



### Sprinkler System Videos

# Sprinkler System Checkup

## Repair and Retrofit

## Smart Controllers & Sensors

## Drip Systems & Soaker Hoses

## Backflow Protection

## Sprinkler System Videos

# Repair

Repair Common Sprinkler System Problems – Explore [DIY Resources](#) or [Find a Professional](#).

Why do my sprinklers produce uneven coverage or poor spray patterns?



Why is my lawn soggy?



Why do I have brown or dry spots in my lawn?



Why do I have moss and fungus in my lawn?



Why doesn't the sprinkler head pop up all the way or retract?



Why are some of my sprinkler heads putting out a mist?



Why are my sprinklers over spraying onto the street and sidewalk?



Why are my sprinklers constantly leaking?



How do I stop erosion and runoff on slopes and landscape contours?



Why isn't my drip system working?



- Low head drainage – install check valve
- Debris in valve diaphragm
- Sprinkler body cap issues

### Low Head Drainage

The most common reason why a sprinkler will leak water when the system is off is called "Low Head Drainage." Low head drainage occurs when the lowest head on a zone allows water to drain from the lateral piping, out of the sprinkler. If it is low head drainage, residual water will stop flowing after all the water has left the pipe.

The solution is to install check valves on sprinklers at the lowest points in a zone. Check valves are a device inside a sprinkler head that prevents water from leaking out after the zone turns off. This keeps water in the underground pipes and prevents gravity from pushing the leftover water out of the lowest heads in a zone. When purchasing a new head, be sure to look for models that have built-in check valves.



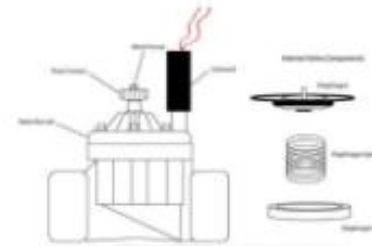
# Why are my sprinklers constantly leaking?

### Debris in Valve Diaphragm

Water may leak through the zone valve. A check valve in the sprinkler will not fix this leak. There may be debris obstructing the valve's diaphragm. If the zone valve for a particular zone is diagnosed as the problem then the solution is:

1. disassemble the valve
2. rinse all the parts with clean water
3. re-assemble the valve.

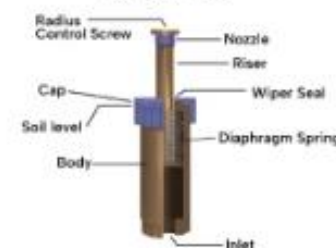
You may need to replace the diaphragm assembly if there is visible damage.



### Sprinkler Body Cap Issues

The sprinkler body cap may be broken or cracked, missing the wiper seal, or there is debris between the body and the cap.

Anatomy of a Sprinkler Head – Diagram illustrating the Parts of a Sprinkler Head





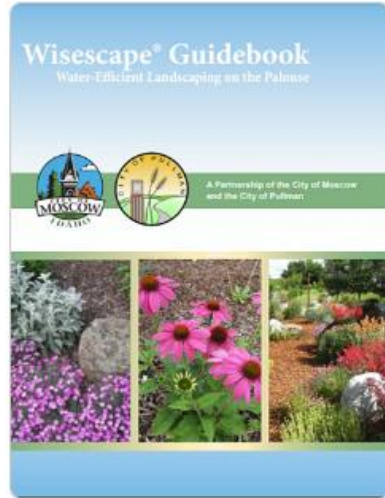
Wondering how to use native and drought tolerant plants to save water while adding beauty and drought resistance to your landscape? In this section you can explore landscape design ideas and demonstration gardens, find rebate programs that will help you shift turf to native plants, and learn how to safely use lawn chemicals.



Landscape Designs



SpokaneScape



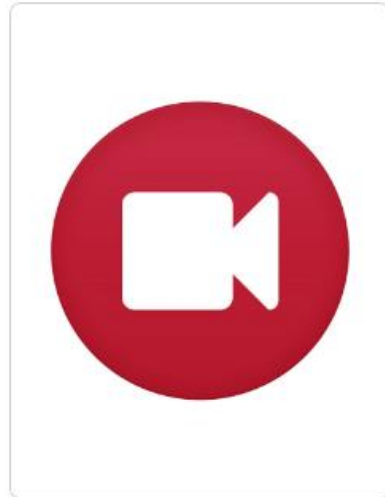
WiseScape



Drought Tolerant and Native Plants



Fertilizers, Pesticides, & Herbicides



Landscape Videos

## Landscape Design

## SpokaneScape

## WiseScape

## Drought Tolerant & Native Plants

## Fertilizers, Pesticides and Herbicides

## Landscape Videos



# SpokaneScape

## Turf Replacement Program

City of Spokane Water customers can earn up to a \$500 credit towards their utility bill after removing lawn and replacing it with water wise plants and mulch. For more information visit [WaterWiseSpokane.org](https://WaterWiseSpokane.org) or contact the Water Wise Spokane Team at [waterwise@spokanecity.org](mailto:waterwise@spokanecity.org).

SpokaneScape turf replacement rebates are only available to residents of the City of Spokane, but anyone can use and adapt the great idea ideas and resources provided by SpokaneScape to reduce outdoor water consumption.

Removing turf grass is one of the most water conscious adjustments a homeowner can make to reduce their water usage and associated costs. A well-designed SpokaneScape will beautify your property, protect our natural resources and the environment; and will inevitably reduce yard maintenance.

- [Spokane Scape 2023 Guidebook](#) (PDF 10.6 MB)
- [Drought Tolerant Plant List](#) (PDF 3.2 MB)
- [Simple Drip Irrigation Diagram](#) (PDF 497 KB)
- [Noxious Weed List](#)
- [SpokaneScape Webinar](#)
- [SpokaneScape 101 Presentation](#) (PDF 7.0 MB)



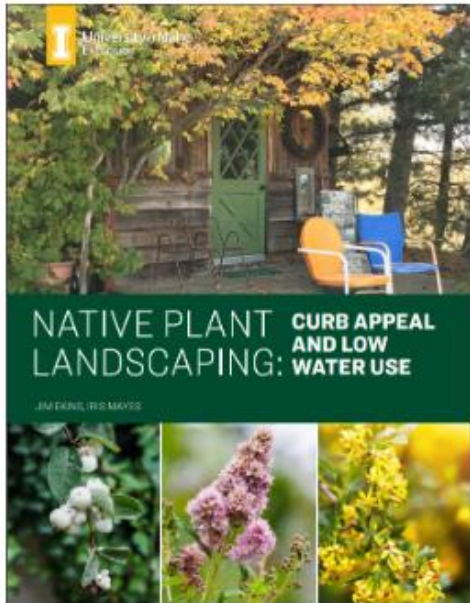
## Before



## After







## UI Extension – Landscaping with Native Plants: Curb Appeal and Low Water Use.

Authors Jim Ekins and Iris Mayes feature 5 native plants and where they might fit your landscape design and water conservation plans. A Native Plant Design Checklist is included along with a variety of suggested readings and resource links. 12 pages. 2022.

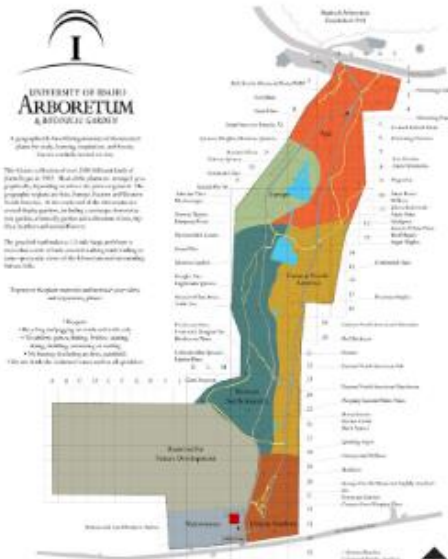
NATIVE PLANT LANDSCAPING

# Drought Tolerant and Native Plants

## UI Arboretum Botanical Garden Xeriscape Garden Plant Inventory



21 page pdf





Outdoor Watering Nerds - Water Conservation <a href="https://spokanewateringnerds.org/">https://spokanewateringnerds.org/</a>	APR	MAY	JUNE	JULY	AUG	SEPT	OCT
<b>Sprinkler Systems</b> <a href="https://spokanewateringnerds.org/sprinkler-systems/">https://spokanewateringnerds.org/sprinkler-systems/</a>							
Sprinkler System Checkup <a href="https://spokanewateringnerds.org/sprinkler-systems/sprinkler-system-checkup/">https://spokanewateringnerds.org/sprinkler-systems/sprinkler-system-checkup/</a>	\$2,100						
Repair and Retrofit <a href="https://spokanewateringnerds.org/sprinkler-systems/repair-retrofit/">https://spokanewateringnerds.org/sprinkler-systems/repair-retrofit/</a>		\$2,100					
Smart Controllers & Sensors <a href="https://spokanewateringnerds.org/sprinkler-systems/smart-controllers-sensors/">https://spokanewateringnerds.org/sprinkler-systems/smart-controllers-sensors/</a>			\$2,100				
Drip Systems & Soaker Hoses <a href="https://spokanewateringnerds.org/sprinkler-systems/drip-systems-soaker-hoses/">https://spokanewateringnerds.org/sprinkler-systems/drip-systems-soaker-hoses/</a>						\$2,000	
Backflow Protection <a href="https://spokanewateringnerds.org/sprinkler-systems/backflow-protection/">https://spokanewateringnerds.org/sprinkler-systems/backflow-protection/</a>						\$2,100	
<b>Leak Detection</b> <a href="https://spokanewateringnerds.org/outdoor-leak-detection/">https://spokanewateringnerds.org/outdoor-leak-detection/</a>							
Read your water meter & Underground Leaks		\$2,000					
<b>Landscapes</b> <a href="https://spokanewateringnerds.org/landscapes/">https://spokanewateringnerds.org/landscapes/</a>							
Drought Tolerant & Native Plants <a href="https://spokanewateringnerds.org/landscapes/drought-tolerant-and-native-plants/">https://spokanewateringnerds.org/landscapes/drought-tolerant-and-native-plants/</a>			\$2,000				
Fertilizers, Pesticides & Herbicides <a href="https://spokanewateringnerds.org/landscapes/fertilizers-pesticides-and-herbicides/">https://spokanewateringnerds.org/landscapes/fertilizers-pesticides-and-herbicides/</a>					\$2,000		
<b>Saving Water Matters</b> <a href="https://spokanewateringnerds.org/saving-water-matters/">https://spokanewateringnerds.org/saving-water-matters/</a>							
Protect the Aquifer - Story Map	\$2,000						\$2,100
<b>Useful Links</b>							
Calculate Water Needs <a href="https://spokanewateringnerds.org/calculate-water-needs/">https://spokanewateringnerds.org/calculate-water-needs/</a>				\$2,000	\$2,100		
Tips to Save Water <a href="https://spokanewateringnerds.org/tips-to-save-water/">https://spokanewateringnerds.org/tips-to-save-water/</a>				\$2,100			

# 2023 Media Campaign

IWAC and SAJB

April – October

KXLY- Phase 3 Digital  
Facebook  
Instagram  
Display Ads  
Retargeting  
20 second videos

# IWAC Media Campaign April - \$2,000



Impressions	132,040
Clicks	1,136
CTR	0.49%
Google	456

**Impressions:** The number of times the ad was displayed.

**Clicks:** The number of times the ad was clicked on.

**CTR (Click Through Rate):** The number of clicks divided by the number of impressions.



# SAJB Media Campaign April - \$2,100



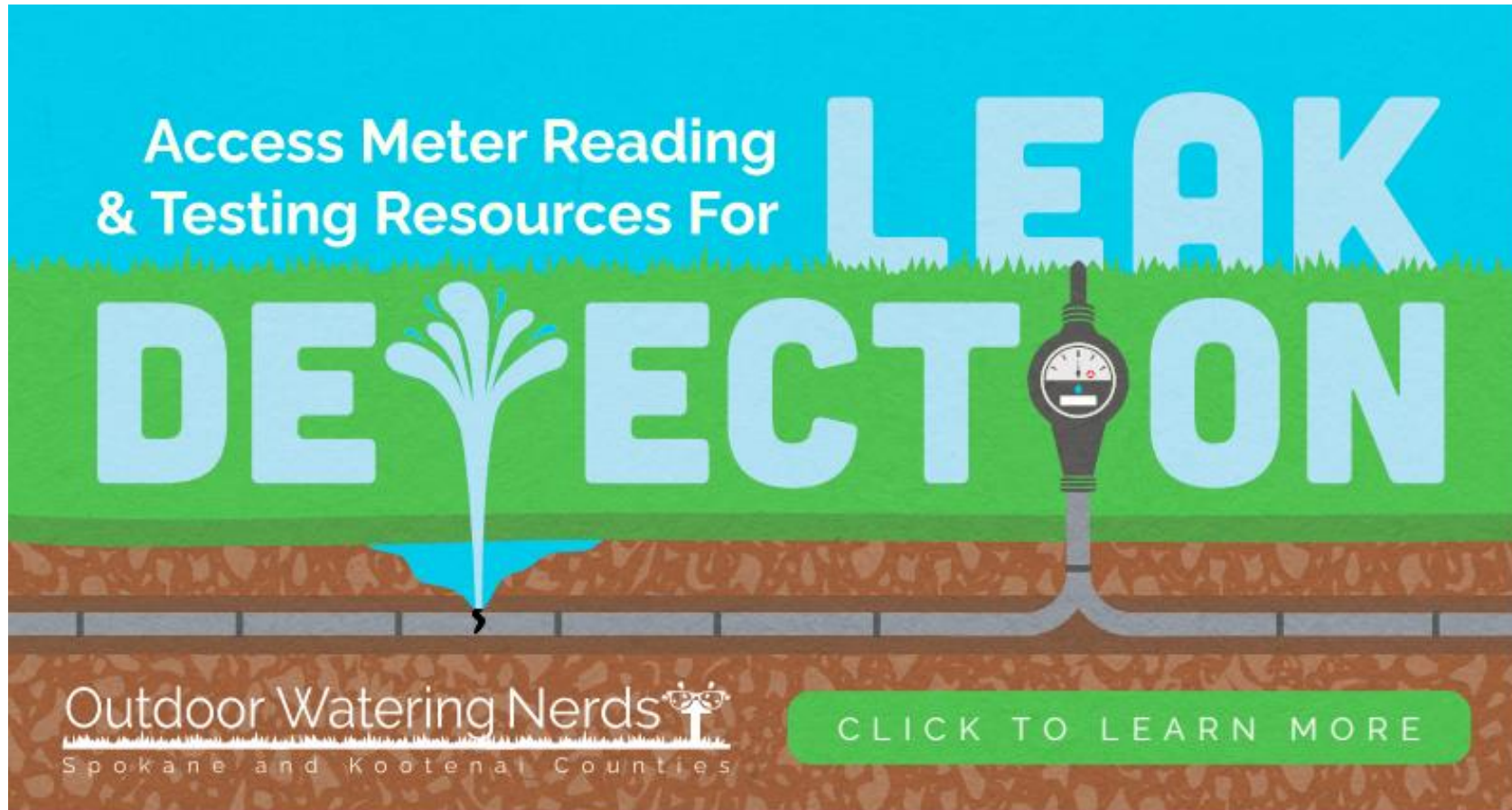
Impressions	142,040
Clicks	1286
CTR	0.74%
Google	341

**Impressions:** The number of times the ad was displayed.

**Clicks:** The number of times the ad was clicked on.

**CTR (Click Through Rate):** The number of clicks divided by the number of impressions.

# IWAC Media Campaign May - \$2,000



Impressions	12,6495
Clicks	1019
CTR	0.55%
Google	1,351

**Impressions:** The number of times the ad was displayed.

**Clicks:** The number of times the ad was clicked on.

**CTR (Click Through Rate):** The number of clicks divided by the number of impressions.



# SAJB Media Campaign May - \$2,100



Impressions	144,033
Clicks	1,148
CTR	0.62%
Google	1,149

**Impressions:** The number of times the ad was displayed.

**Clicks:** The number of times the ad was clicked on.

**CTR (Click Through Rate):** The number of clicks divided by the number of impressions.

# IWAC Media Campaign June - \$2,000



Impressions	106,488
Clicks	1,688
CTR	1.33%
Google	636

**Impressions:** The number of times the ad was displayed.

**Clicks:** The number of times the ad was clicked on.

**CTR (Click Through Rate):** The number of clicks divided by the number of impressions.



# SAJB Media Campaign June - \$2,100



Impressions	147,147
-------------	---------

Clicks	1,082
--------	-------

CTR	0.54%
-----	-------

Google	2,117
--------	-------

**Impressions:** The number of times the ad was displayed.

**Clicks:** The number of times the ad was clicked on.

**CTR (Click Through Rate):** The number of clicks divided by the number of impressions.



# IWAC Media Campaign July - \$2,000

Wondering how much to water your lawn?

**CALCULATE  
WATER  
NEEDS**

Date + Watering Frequency =  
Water Needed for YOUR Lawn

with **The Nerds Water Needs Calculator!**

[CLICK TO LEARN MORE](#)

Outdoor Watering Nerds  
Spokane and Kootenai Counties

Impressions	159,575
Clicks	1,488
CTR	0.56%
Google	1,261

**Impressions:** The number of times the ad was displayed.

**Clicks:** The number of times the ad was clicked on.

**CTR (Click Through Rate):** The number of clicks divided by the number of impressions.



# SAJB Media Campaign July - \$2,100



Impressions	133,372
Clicks	2,487
CTR	0.86%
Google	1,380

**Impressions:** The number of times the ad was displayed.

**Clicks:** The number of times the ad was clicked on.

**CTR (Click Through Rate):** The number of clicks divided by the number of impressions.

4 Videos Aired in August - \$2,500

**9,693 Video Thru Plays**

- Leak Detection - <https://youtu.be/PoWR8W-ogp8>
- Repair & Retrofit - <https://youtu.be/8lNjqqmQU0c>
- Saving Water Matters - <https://youtu.be/Eqk9hy5EmCl>
- Sprinkler Savy - <https://youtu.be/Ca-ELDiLhtY>

Video Thru Plays: The number of times a video ad was viewed in its entirety.



# IWAC Media Campaign August - \$800



Impressions	127,795
Clicks	395
CTR	0.09%
Google	397

**Impressions:** The number of times the ad was displayed.

**Clicks:** The number of times the ad was clicked on.

**CTR (Click Through Rate):** The number of clicks divided by the number of impressions.

# SAJB Media Campaign August - \$800



Impressions	128,524
Clicks	359
CTR	0.24%
Google	314

**Impressions:** The number of times the ad was displayed.

**Clicks:** The number of times the ad was clicked on.

**CTR (Click Through Rate):** The number of clicks divided by the number of impressions.



# IWAC Media Campaign September - \$2,000



Impressions

Clicks

CTR

Google

**Impressions:** The number of times the ad was displayed.

**Clicks:** The number of times the ad was clicked on.

**CTR (Click Through Rate):** The number of clicks divided by the number of impressions.

# SAJB Media Campaign September - \$2,100



Impressions

Clicks

CTR

Google

**Impressions:** The number of times the ad was displayed.

**Clicks:** The number of times the ad was clicked on.

**CTR (Click Through Rate):** The number of clicks divided by the number of impressions.



# SAJB Media Campaign October - \$2,100



Impressions

Clicks

CTR

Google

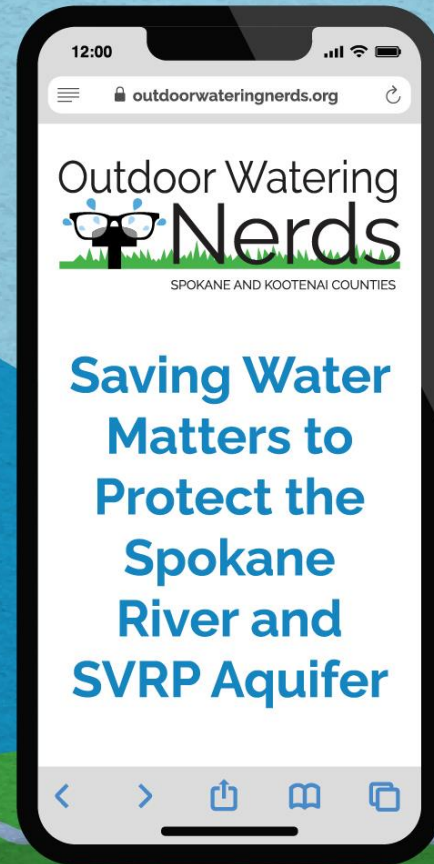
**Impressions:** The number of times the ad was displayed.

**Clicks:** The number of times the ad was clicked on.

**CTR (Click Through Rate):** The number of clicks divided by the number of impressions.

Visit  
**OUTDOOR  
WATERING  
NERDS**

Solutions  
at Your  
Fingertips



[OutdoorWateringNerds.org](https://OutdoorWateringNerds.org)

Feel free to  
connect your  
community to the  
Nerds website.







A Regional Resource Created By



Thank You  
Questions?

Tonilee Hanson    509-847-4337    [sajbinfo@gmail.com](mailto:sajbinfo@gmail.com)