

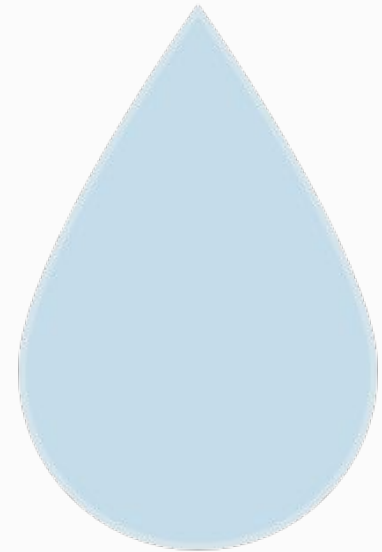
Integrated Planning

Columbia Basin Sustainable Water Coalition

September 21, 2023

Office of Columbia River's Mission

- Aggressively pursue water supply development for both instream and out-of-stream uses
- RCW 90.90 Statutory Focus
 - Alternatives to groundwater for Odessa Subarea
 - Water supply for pending water right applications
 - Uninterruptible water supplies for interruptible water right holders
 - Future water supplies for municipal, domestic, industrial, and irrigation needs
 - Water for instream needs



What is Integrated Planning?

- Integrate the efforts of a diverse group of agencies, tribes, and stakeholders around a water supply issue
 - Create a space for all the interest groups to meet and discuss different perspectives
 - Identify shared goals and outcomes
 - Work together on implementation to reach the shared goals and outcomes
 - Make consensus-based decisions

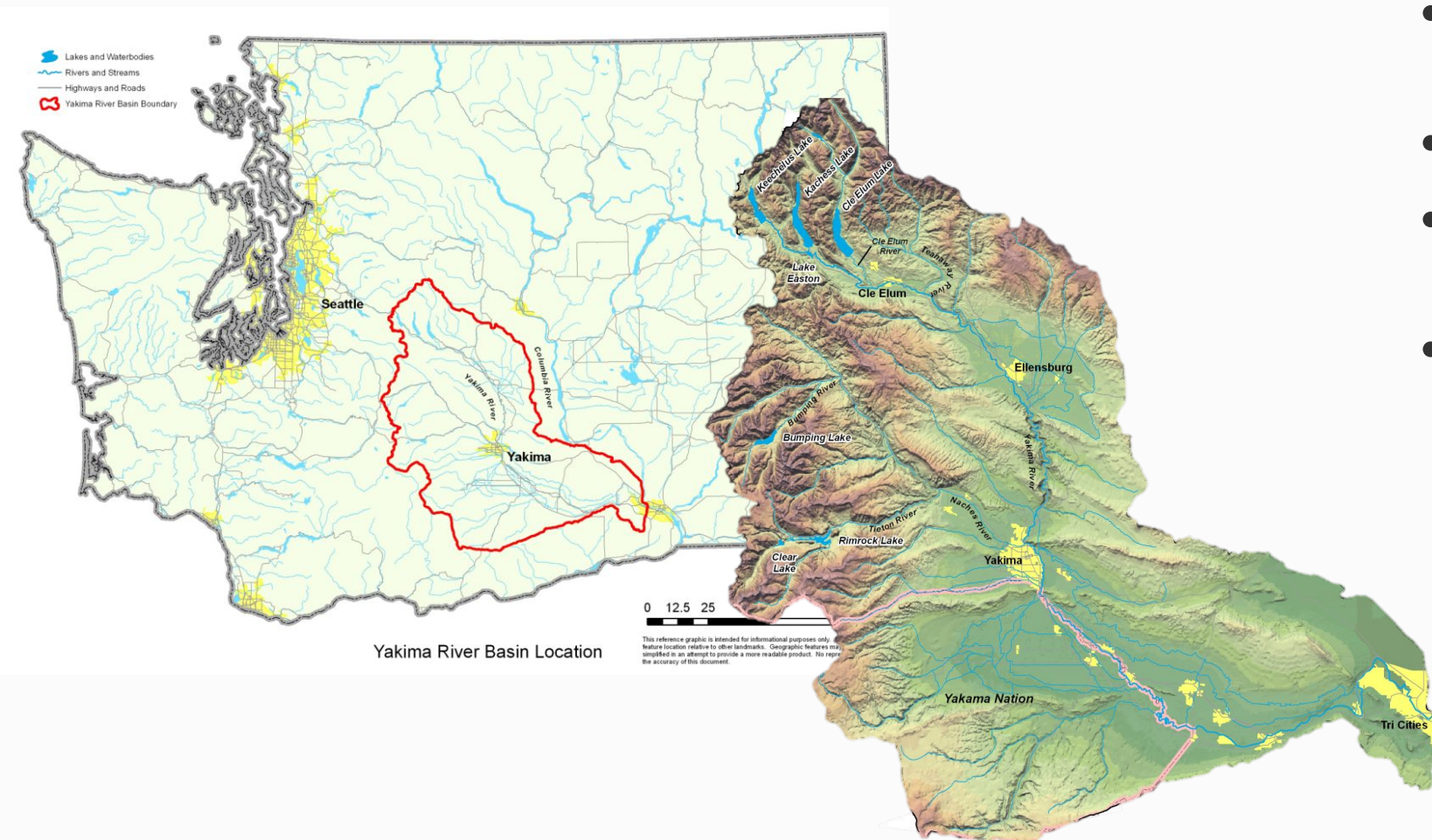
OCR Integrated Planning Examples

- Yakima Basin Integrated Plan
- Icicle Strategy
- Walla Walla Water 2050 Strategic Plan



Yakima Basin Integrated Plan

- Basin size: 6,155 sq. miles
- Population: 360,000
- \$4.5 Billion agricultural economy
- Historically, second to the Snake River in supporting Columbia Basin salmon and steelhead runs



YRBWEP Workgroup Members

- **Federal Agencies**

- Bureau of Reclamation
- National Marine Fisheries Service
- U.S. Fish and Wildlife Service
- U.S. Forest Service
- U.S. Army Corps of Engineers

- **Yakama Nation**

- Yakama Nation Natural Resources
- Yakima/Klickitat Fisheries Project

- **Washington State Agencies**

- Department of Ecology
- Department of Agriculture
- Department of Fish and Wildlife
- Department of Natural Resources

- **Local Governments**

- Benton County
- Kittitas County
- Yakima County
- City of Yakima

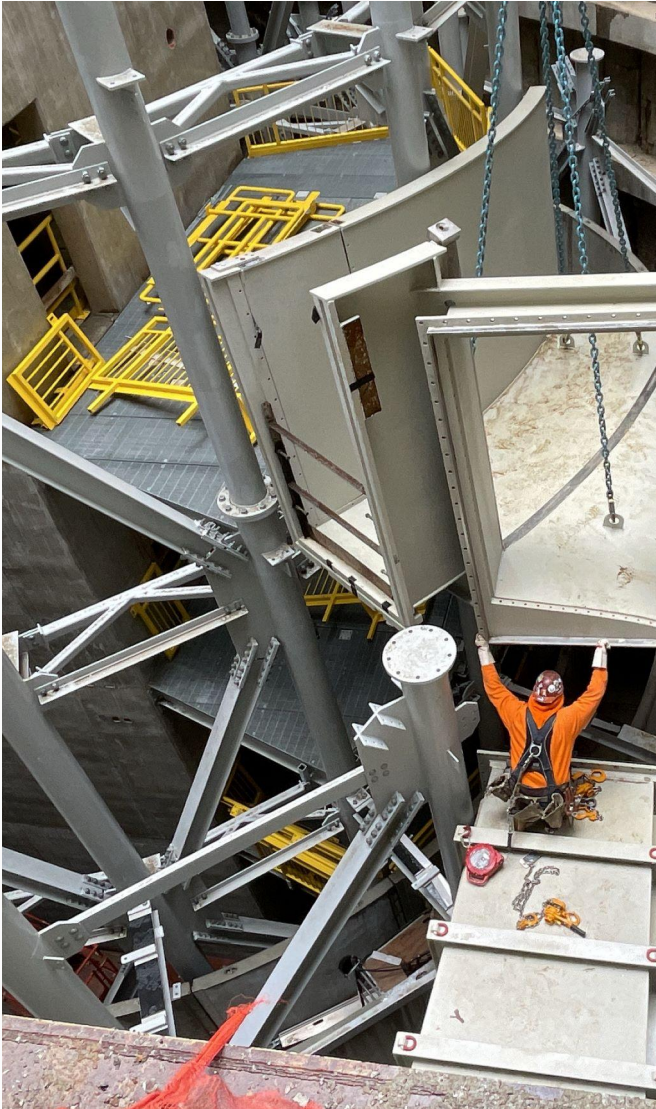
- **Irrigated Agriculture**



14-Year Anniversary – June 2009 to June 2023

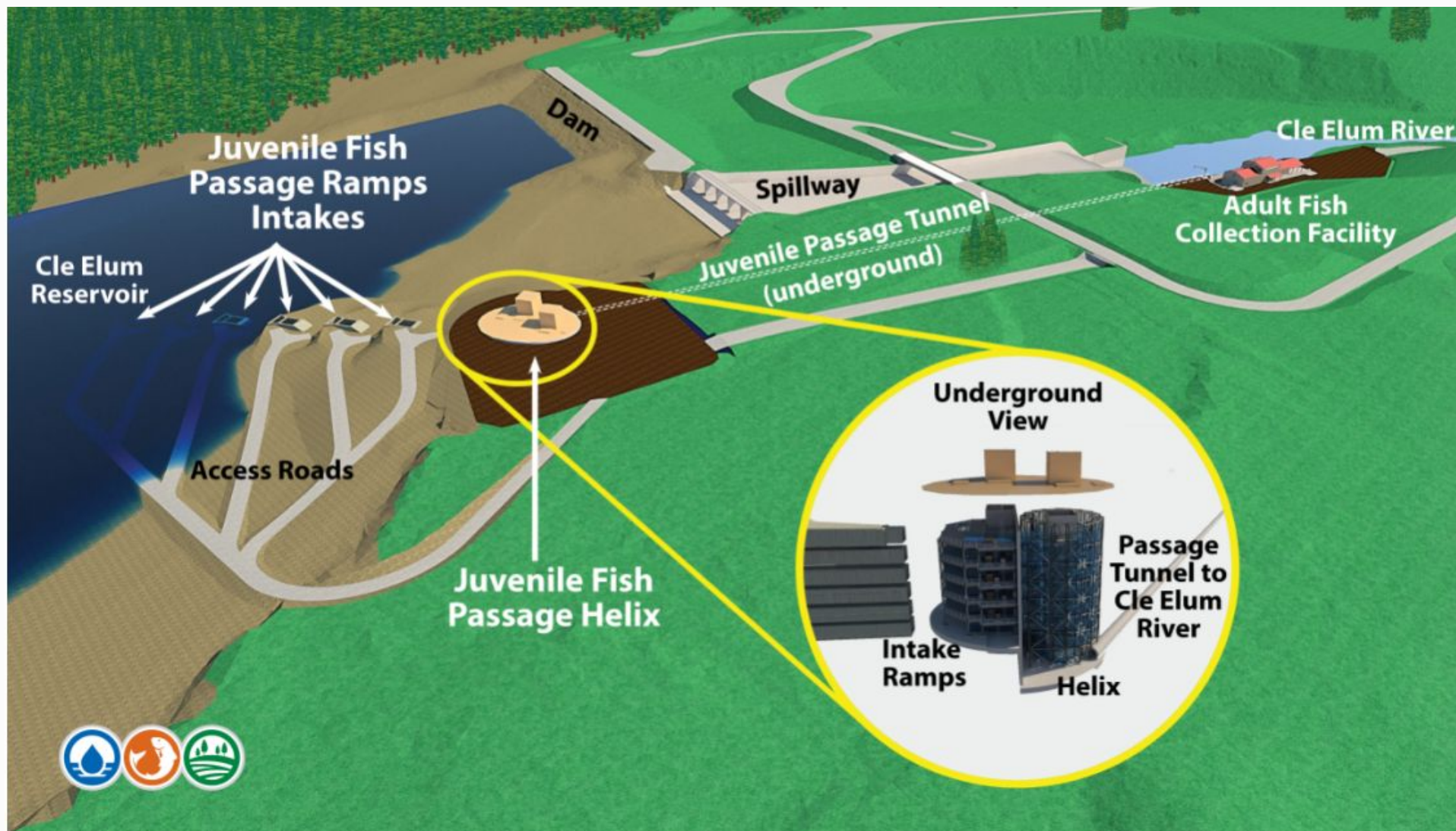
Everyone will get some of what they need, but not everything they want.

YBIP – 7 elements



- Habitat/Watershed Protection and Enhancement
- Fish Passage
- Enhanced Water Conservation
- Structural and Operational Changes
- Surface Water Storage
- Groundwater Storage
- Market Driven Reallocation

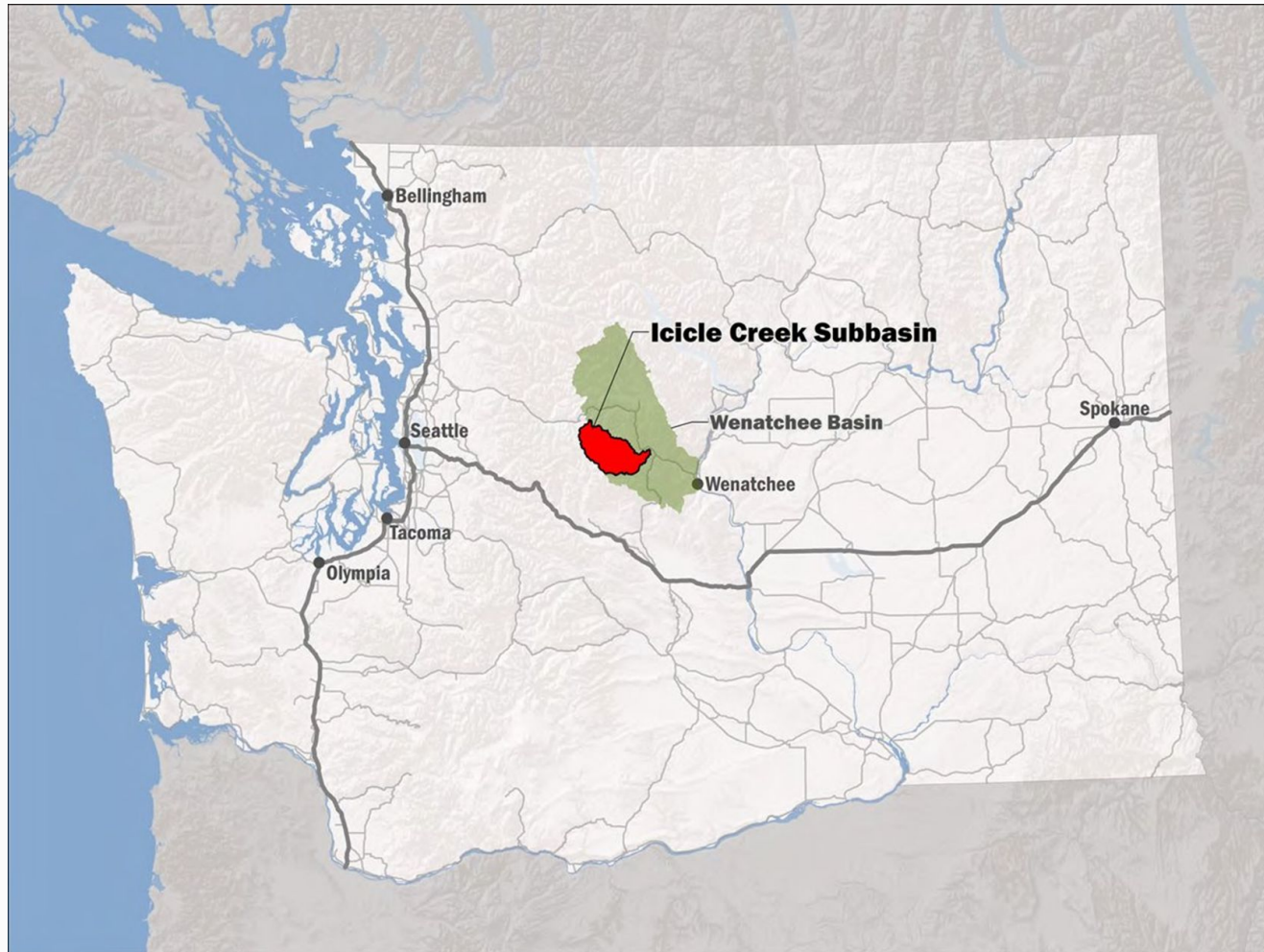
Cle Elum Pool Raise and Fish Passage



Cle Elum Juvenile Fish Passage Helix



Icicle Strategy



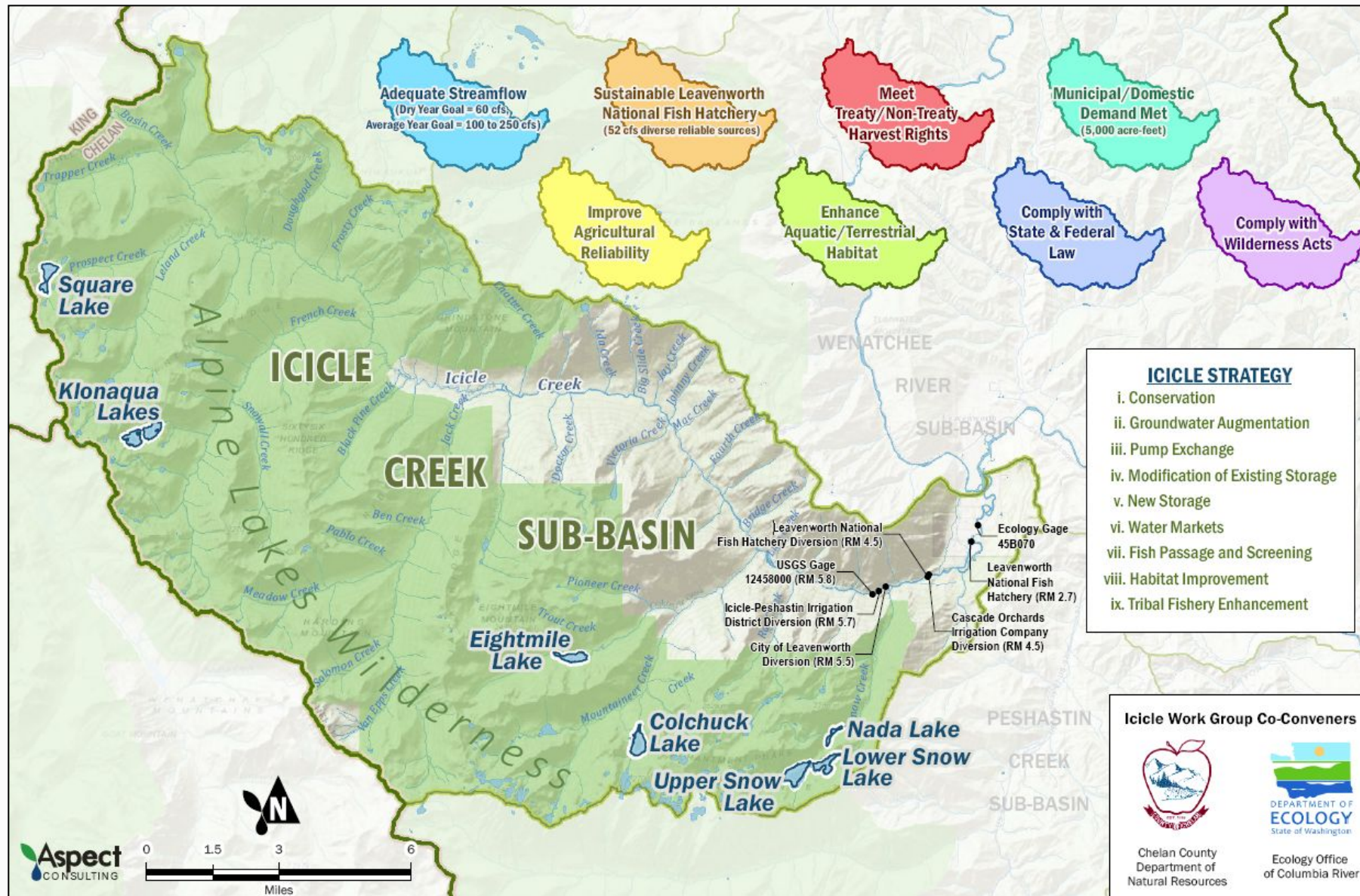
- Collaborative process that will achieve diverse benefits defined by all the Guiding Principles.
- The Icicle Creek Work Group uses best available science to identify and support water management solutions that lead to implementation of high-priority water resource projects in the drainage.

Icicle Strategy Workgroup Members

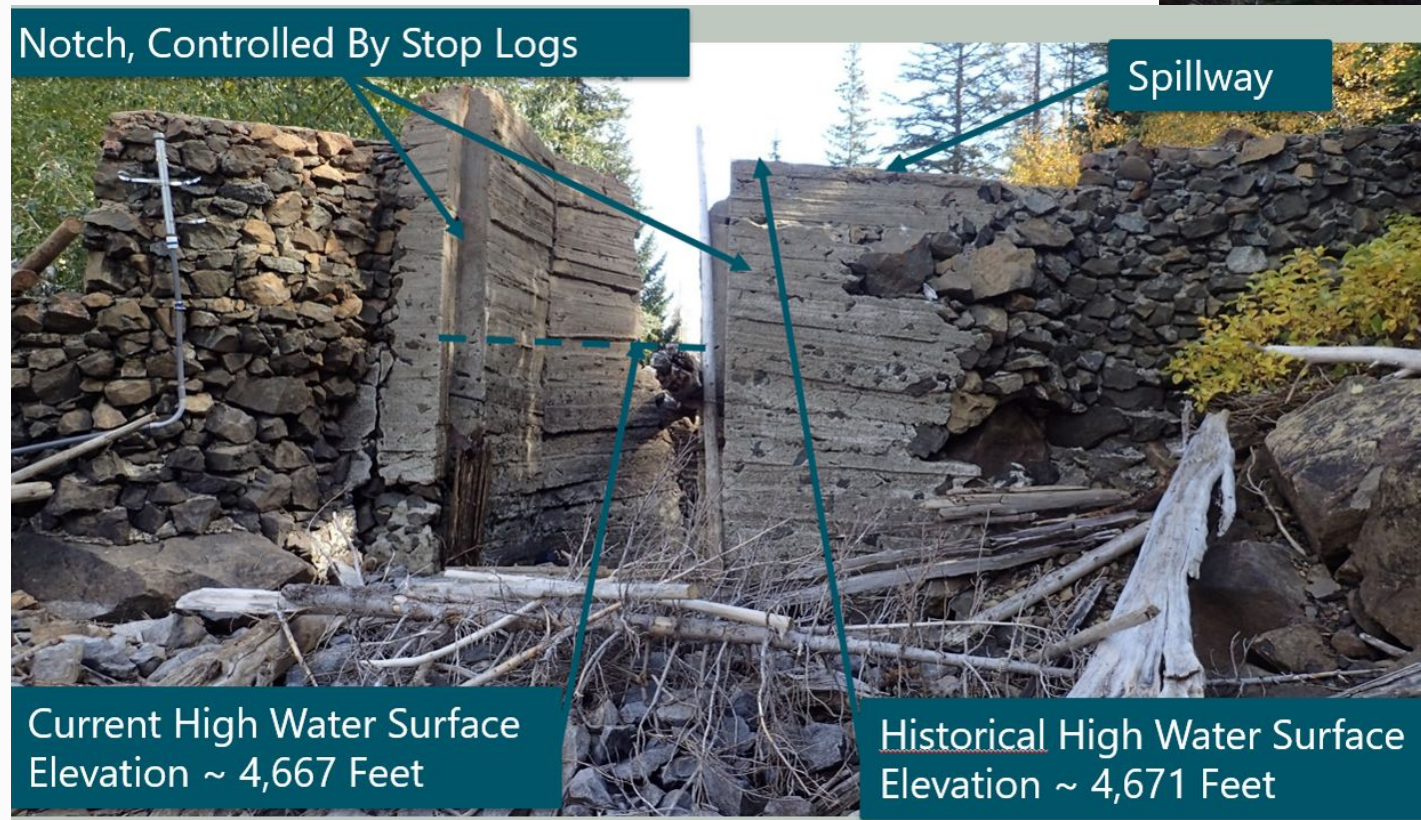


- Ecology Office of Columbia River
- Chelan Co Board of Commissioners
- Yakama Nation
- WA State Dept of Fish & Wildlife
- Conf Tribes of the Colville Reservation
- Icicle & Peshastin Irrigation District
- USFWS – Leavenworth Fish Hatchery
- City of Leavenworth
- NOAA Fisheries
- WA Water Trust
- US Forest Service
- Trout Unlimited
- Agricultural Representatives
- City of Cashmere
- US Bureau of Reclamation
- Cascadia Conservation District
- Cascade Orchard Irrigation Co
- Icicle Creek Watershed Council

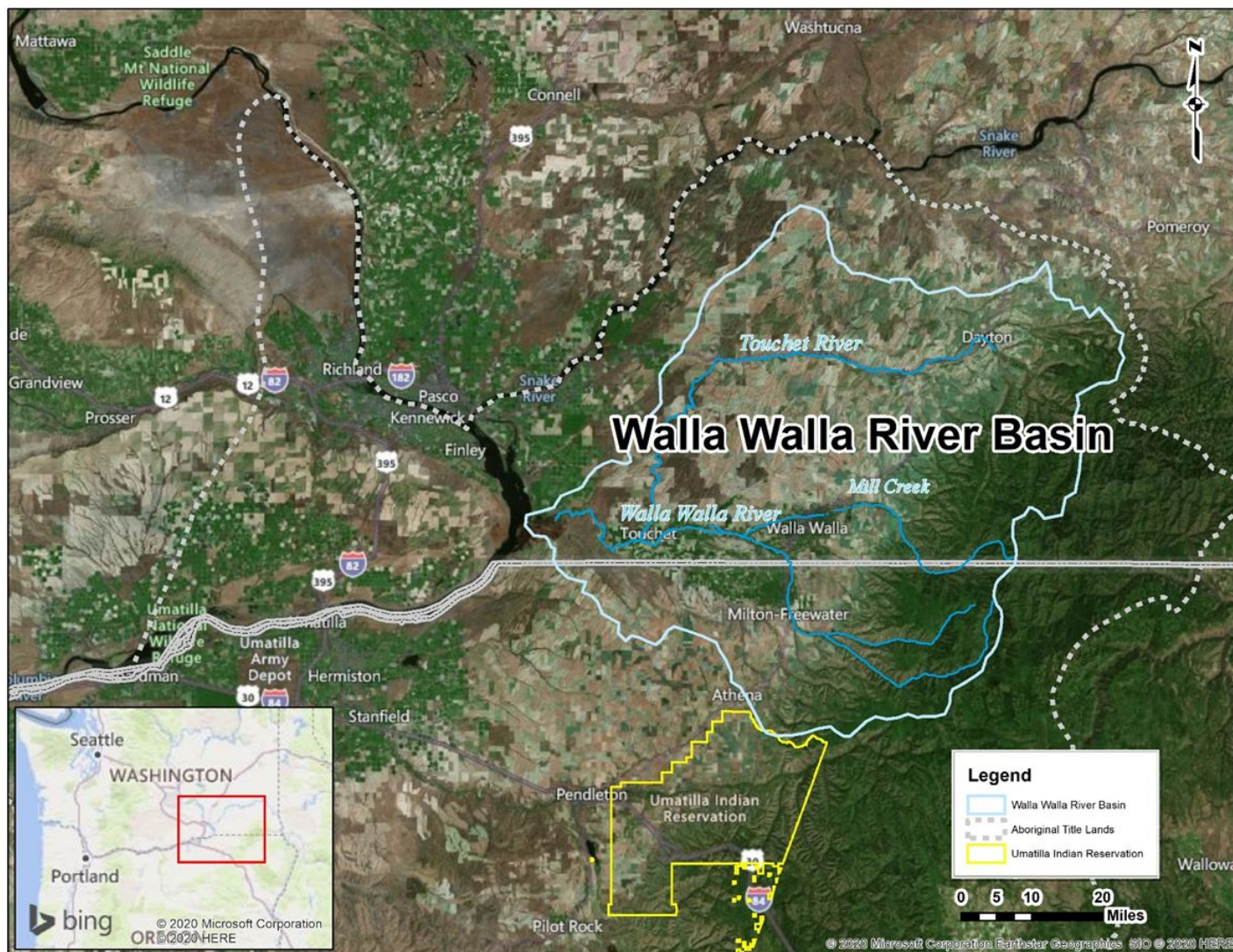
Icicle Strategy Guiding Principles



Eightmile Dam



Walla Walla Water 2050 Strategic Plan



- Bi-state basin
- Over-appropriated; junior water rights are curtailed and instream flows go unmet
- ~85,000 irrigated acres
- Municipal, industrial, and habitat demand

Walla Walla Water 2050 Strategic Plan

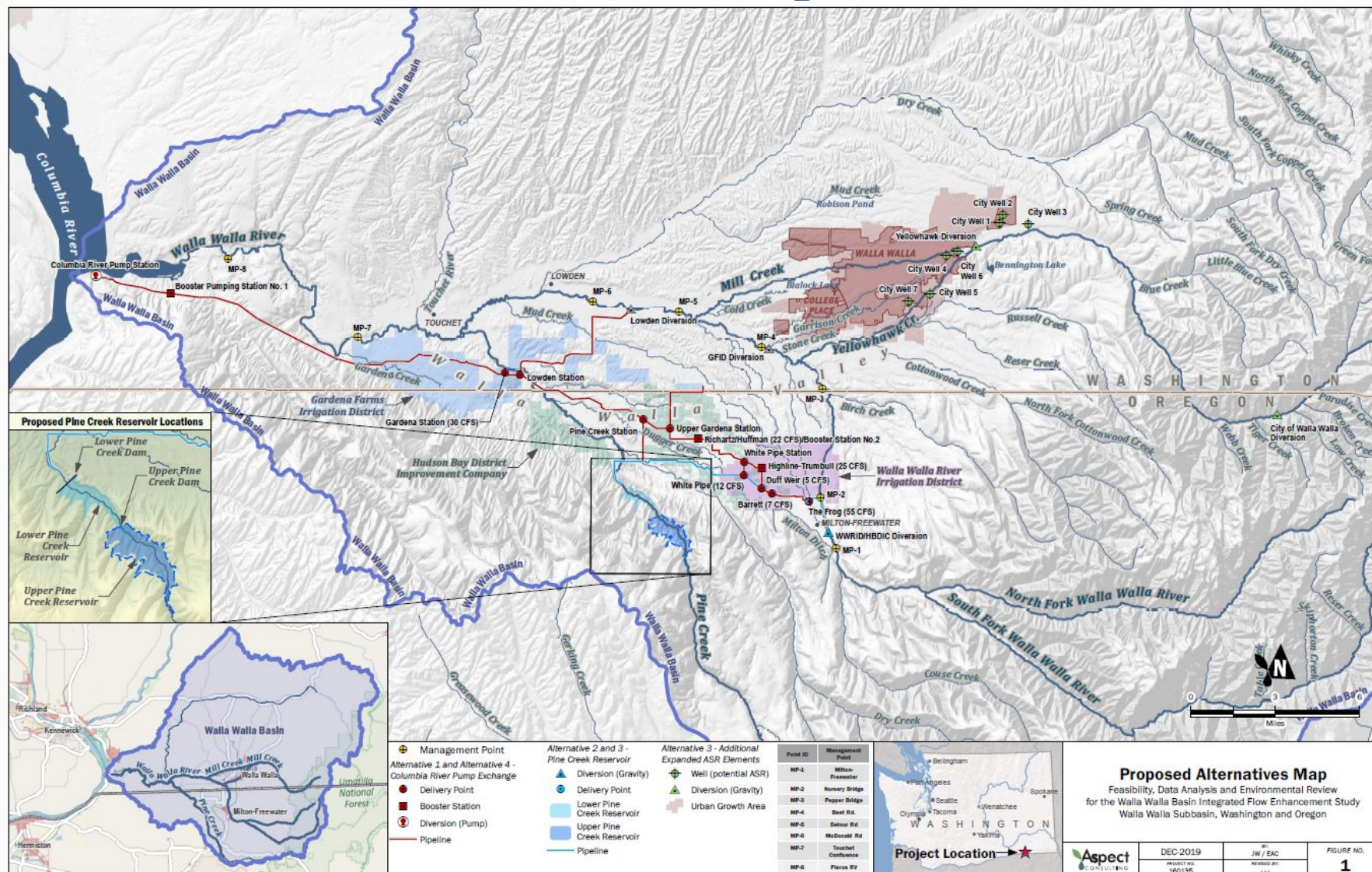


- 30-year effort
- Ensure adequate water – for people, irrigated agriculture, and instream flows for fish and wildlife
- Identify and prioritize key strategies for project implementation
- Led by the states of WA and OR, and the CTUIR, with participation by local stakeholders

WW2050 Basin Advisory Committee

Interest Group	Primary	Alternate
Agriculture	Mark Wagoner - Gardena Farms Irrigation District	Mike Ingham - Gardena Farms Irrigation District
	Annie Byerley - Walla Walla Conservation District	Renee Hadley - Walla Walla Conservation District
	Allie Newhouse - Little River Group	TBD
	Travis Trumbull - Walla Walla River Irrigation District	Nathan Rea - Oregon Agriculture
Environment	Ralph Perkins - Walla Walla Basin Watershed Council	Arnold Coe - Walla Walla Basin Watershed Council
	Judith Johnson - Kooskooskie Commons	Sarah Dymecki - Washington Water Trust
	John Foltz - Snake River Salmon Recovery Board	Ali Fitzgerald - Snake River Salmon Recovery Board
Recreation/Quality of Life	Linda Herbert - Blue Mountain Land Trust	Jerry Norquist - Community Member
Economic Development	Nicholas Velluzzi - Walla Walla Community College	Mike Fredrickson - Port of Walla Walla
Local Government	Steven Patten - City of Milton Freewater	Brian Steadman - City of Milton Freewater
	Frank Nicholson - City of Walla Walla	TBD
	Dan Dorran - Umatilla County	TBD
	Todd Kimball - Walla Walla County	Jack Miller - Columbia County
Tribal Government	Jerimiah Bonifer - CTUIR	David Haire - CTUIR
Federal Government	Justin Yeager - NOAA NMFS	Colleen Fagan - NOAA NMFS
	Cindy Boen - US Army Corps of Engineers	Bret Walters - US Army Corps of Engineers
State Government	Mark Wachtel - WA Department of Fish and Wildlife	Jeff Dengel - WA Department of Fish and Wildlife
	Taylor McCroskey - OR Department of Fish and Wildlife	TBD
Tri Sovereigns (Ex-Officio/Non-Voting Members)	Anton Chiono - CTUIR	
	Chris Kowitz - OR Water Resources Department	
	Brook Beeler - WA Department of Ecology	Melissa Downes - WA Department of Ecology

WWW2050 Flow Study Alternatives





Thank you

Tom Tebb, gteb461@ecy.wa.gov

Scott Tarbutton,
scta461@ecy.wa.gov